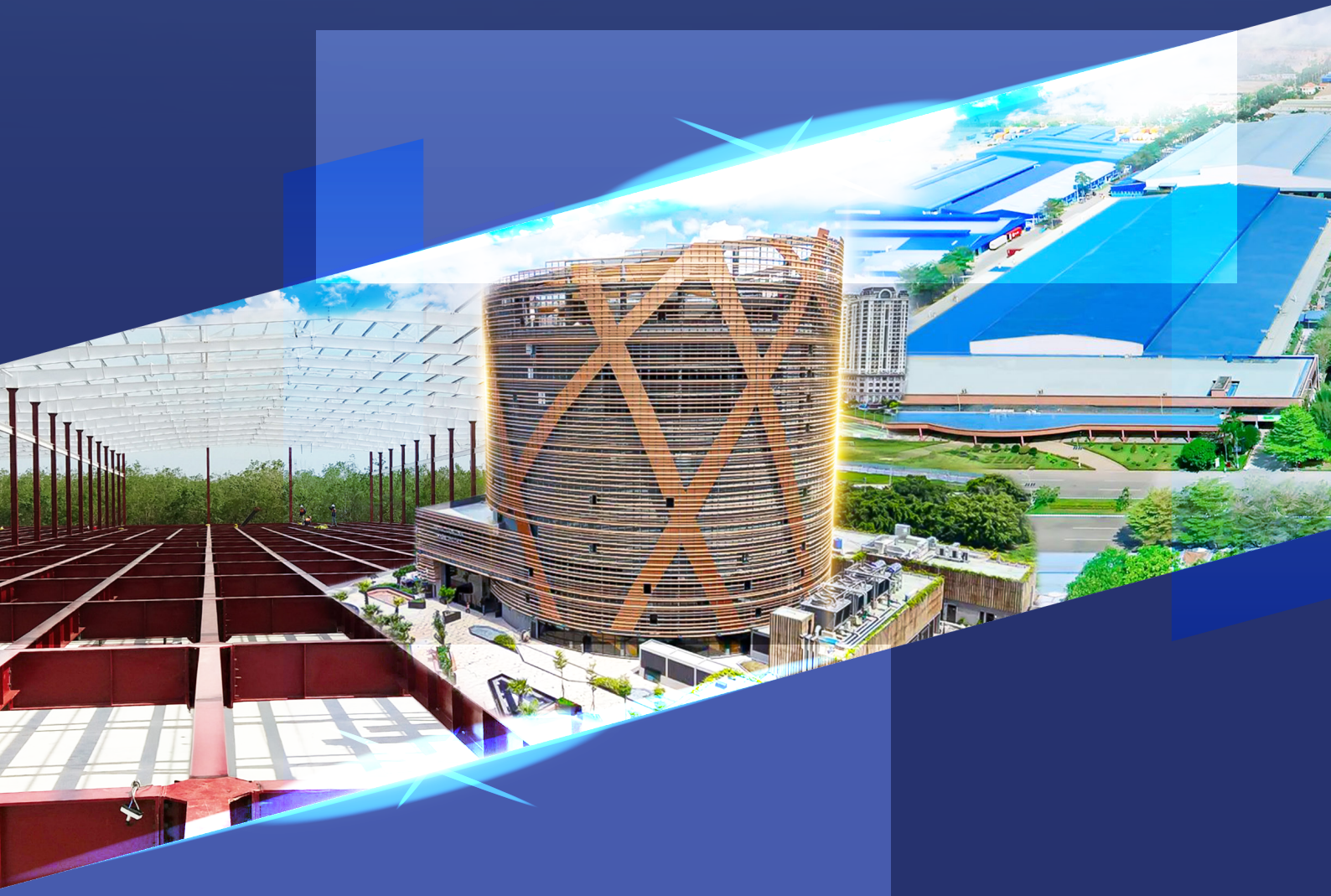




BROCHURE

NHAT AN MECHANICAL CONSTRUCTION CO.,LTD



PRE-ENGINEERED STEEL BUILDINGS - STEEL STRUCTURES
COMMERCIAL PROJECTS



Content

CEO's Message	4
General introduction	6
Core value - Vision - Mission	12
Service	16
Product	28
Typical projects	52
Multi-phase projects	62
Other projects	66
Certificate	78
Investor and Partner	83

CEO's Message

Dear Clients, Partners, and our employees,

Founded in 2001 and with over 20 years of development, Nhat An Steel left a significant mark as a manufacturer of standard steel structures and pre-engineered steel buildings in Vietnam. With notable projects including Phu Quoc Airport, Phu Tho Circus Center, and Kumho Tire Factory, affirming the value we can bring in the aspects of prestige, dedication, and quality.



This success results from a highly skilled team, comprising engineers and other dedicated professionals. So, I would like to thank each member of Nhat An Steel. Thank you for your dedication, passion, professionalism, and discipline. Hopefully, with the ability, knowledge, relentless efforts, and solidarity of the Board of Directors, Management Board, and all employees, Nhat An Steel will conquer higher and more impressive milestones in the future.

Alongside this, we have achieved significant milestones at each stage of our development. Thanks to customers' and colleagues' trust, support, and collaboration. We express sincere appreciation and the deepest gratitude to those who have always trusted and chosen Nhat An Steel as a reliable partner to contribute together to build meaningful works and enthusiasm. Customer and partner trust and support motivate us to improve continuously and provide the best products and services.

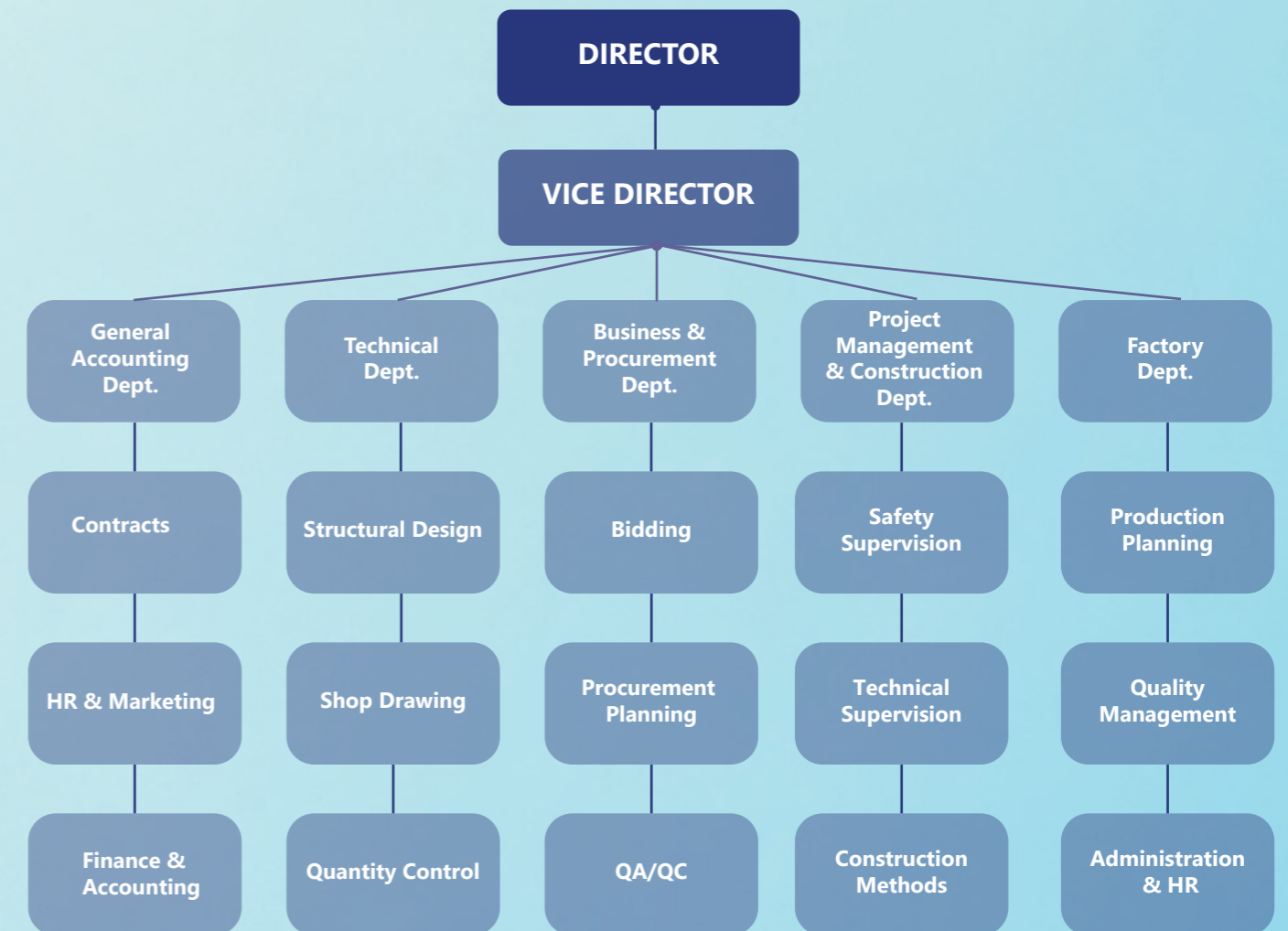
Nhat An Steel looks forward to your continued trust and collaboration in achieving new successes together and building a strong and prosperous future.

Once again, thank you very much!

Best regards,

Tran Thanh Binh

Organizational Chart



About us

NHAT AN MECHANICAL CONSTRUCTION CO.,LTD (Nhat An Steel) offers optimized solutions for steel structures and pre-engineered steel buildings for various projects such as airports, commercial buildings, factories, warehouses, cold storage, steel structure buildings, pipe racks, etc.

Established in 2001, after more than 20 years of development, restructuring, and expansion, we proudly leave our marks on sustainable and significant projects alongside the development of society.

Nhat An is a reliable partner, equipped with a team of highly specialized and experienced engineers, along with skilled professionals. We offer comprehensive services that include **Design, Fabrication, Erection** and **Warranty**. We are committed to offering flexible solutions that meet customers' requirements and are suitable for their functions. Our high-quality products feature precise finishes, ensuring our projects reflect both aesthetics and durability.



Milestones

2001

Nhat An Steel was founded.

2002

The first machining plant was built in **District 12, Ho Chi Minh City**.

2006

The new factory, located in **Nhon Trach II Industrial Park, Nhon Trach District, Dong Nai Province**:
Capacity: 800 tons per month
Area: 12,000 m²

2007

Won the bid for **KUMHO TIRES GEORGIA FACTORY** project - **6000 (tons)**. The largest-scale project in the period from 2007 and before.

2011

Won the bid for the **PASSENGER TERMINAL PHU QUOC INTERNATIONAL AIRPORT** project - **2000 tons**.

2017

Achieved a revenue milestone of **310 billion VND**. The highest recorded period was from 2001 to 2017, since its establishment.

2023

Won the bid for the **PHU THO CIRCUS AND MULTI-PURPOSE PERFORMANCE THEATER** project - **1750 tons**.

Factory Area 12,000 m²

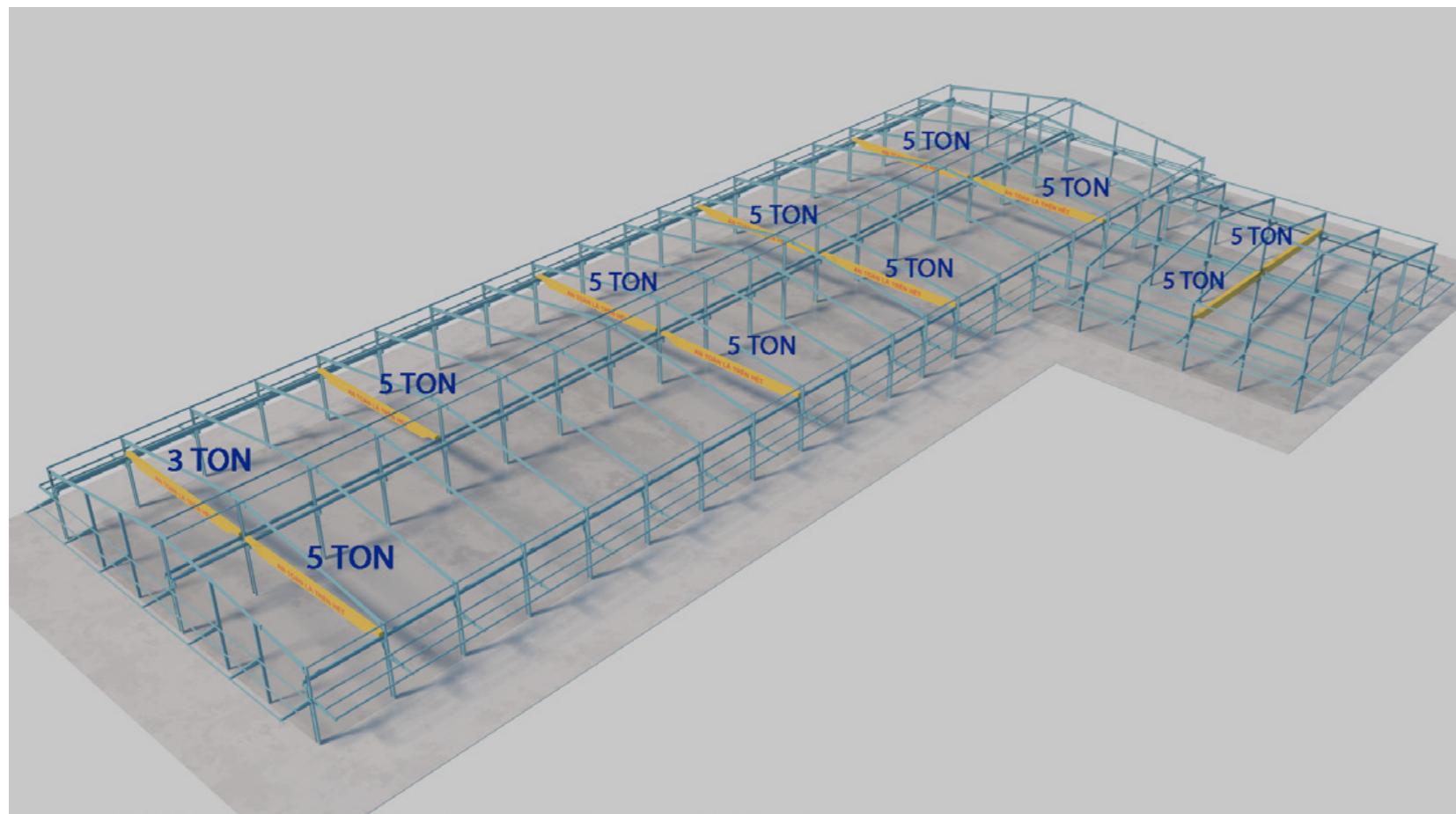
Capacity 800 tons/month

Nhat An Steel Structure Factory is located in Nhon Trach 2 Industrial Park, Dong Nai Province, a key economic area in the South, approximately 50km from Ho Chi Minh City, and is conveniently located near major ports such as Cai Mep and Phu My, facilitating efficient transportation and trade.

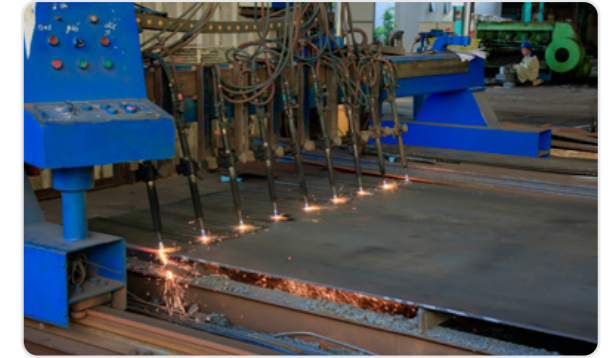
The factory was established in 2006. We have gone through consistent development over approximately 20 years, from small projects with primitive production lines to large-scale projects that meet high-quality standards, demonstrating perseverance, innovation, and a desire to reach further.



LAYOUT OF MACHINERY AND OVERHEAD CRANE



Laser Cutting Machine



CNC Gas cutting Machine



CNC Plasma and Gas cutting Machine



Gantry beam welding Machine



Beam straightening Machine



Shot blasting Machine



Plate drilling Machine



Bending Machine

Core Value



PEOPLE

At NHAT AN STEEL, we believe that **“The most valuable asset of the company is its people”** and **“Putting people at the center of development”**.

Focus on investing in human resource development through training programs to improve the level of professional and qualitative knowledge for all employees. At the same time, we create a friendly working environment, thereby building a united and strong team.

“Responsibility – Dedication – Respect – Love”



CUSTOMERS

Building and developing strong cooperation.

We are committed to always **listening, respecting, and improving** to meet customers’ constructive feedback at the highest level through each project, bringing long-term and sustainable value to customers. From there, **we build and develop a strong partnership**.



COMMUNITY

We are aware that the value and development of the business are always associated with community responsibility. Therefore, **Nhat An Steel** has been creating job opportunities for residents as well as joining hands to help those living in difficult conditions. Additionally, we invest in education and nurture the potential of the younger generation, helping to build a strong foundation for future social development.



PRODUCTS AND SERVICES

Constantly enhancing production processes as well as improving operating systems to overcome previous limitations in manufacturing steel structures and pre-engineered steel buildings that optimize the products and services provided.



THE MUTUAL BENEFIT

We consistently emphasize the principle of **“Benefits Harmonizing – Risks Sharing”**, which fosters beneficial relationships with customers, partners, suppliers, colleagues, and employees. This approach leads to shared success and sustainable development for all involved.



STRONG FOUNDATION

With **20 years of experience** in manufacturing steel structures and pre-engineered steel buildings, we have been developing a strong partnership with each customer, playing a role in **creating** and **building** a solid industrial foundation.



REACHING INTERNATIONAL LEVEL

Position **Nhat An** as an international brand, especially in the **Southeast Asian** market within the next 5 years.



IMPROVEMENT & PERFECTION

Continuously **updating, advancing, and developing** production processes and operating systems to provide **superior-quality products** and meet customers' needs.



IMPROVING THE QUALITY OF LIFE

We not only provide aesthetic living and working spaces with **precise excellence** in detail and sustainability, but also offer job opportunities. By contributing to creating industrial value, we aim to **enhance the quality of life for the community**.



AIMING FOR A PROSPEROUS SOCIETY

Build a developed and prosperous society through the effort and intelligence expressed in each project. At the same time, we are committed to a work environment that offers stable job opportunities and enhances the quality of life for our employees. Aim to encourage employees to reach their full capacity, remain with us long-term, and accompany the growth of our businesses.



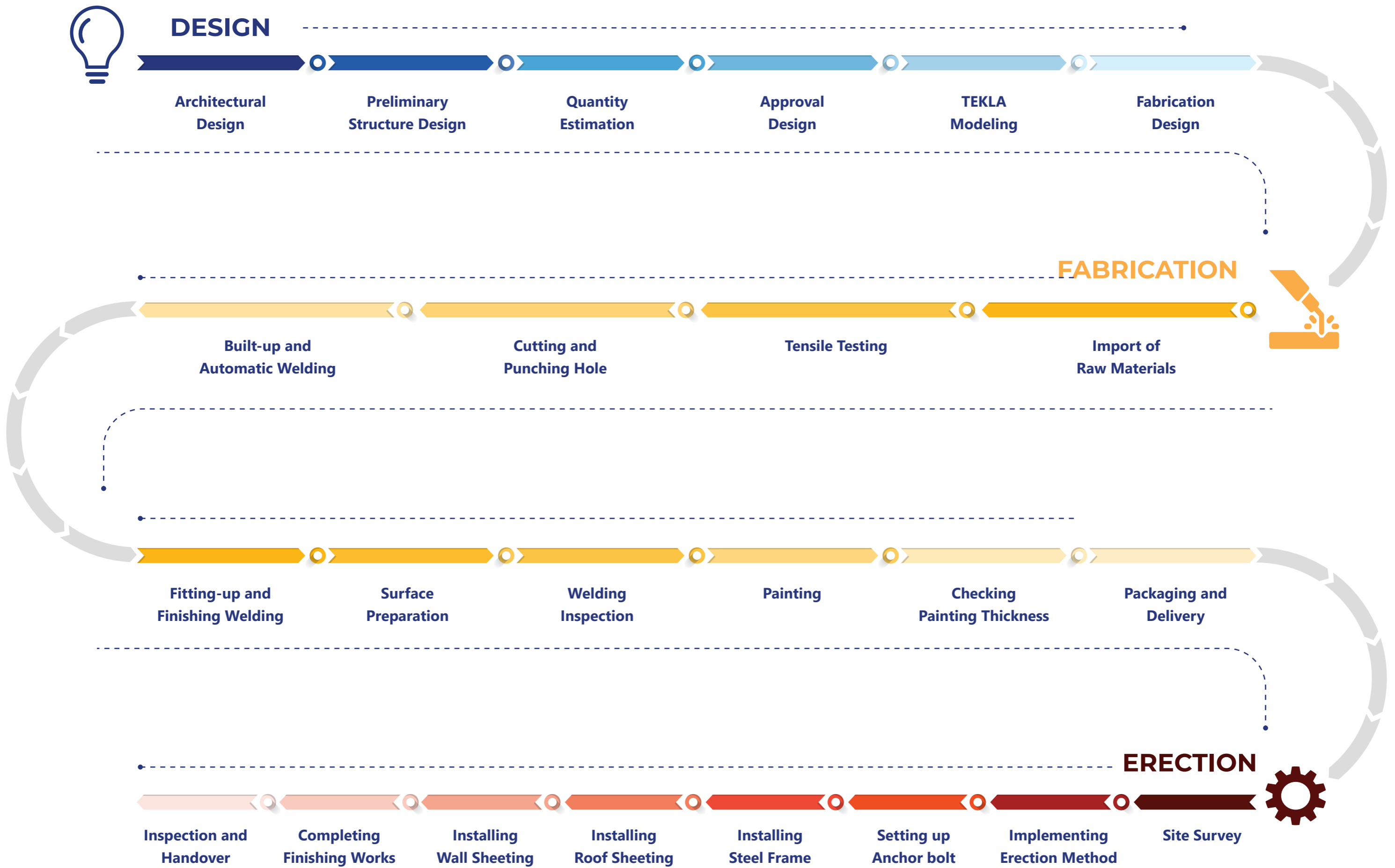
PROOF OF VIETNAMESE INTELLECT

Promote Vietnamese expertise and intellect throughout Southeast Asia via international products and projects.

SERVICE

Nhat An Steel offers comprehensive services in **DESIGN**, **FABRICATION** and **ERECTION**. With a team of experienced professionals, we are confident in providing optimal solutions tailored to our customers' needs.





DESIGN PROCESS

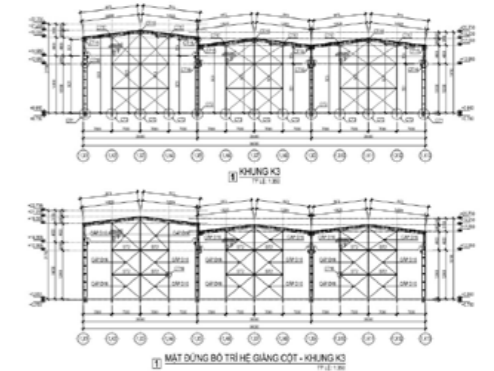
01 ARCHITECTURAL DESIGN

Receive customers' requests and provide optimal architectural solutions that ensure a balance of aesthetics, functionality, and practicality in construction.



04 APPROVAL DESIGN

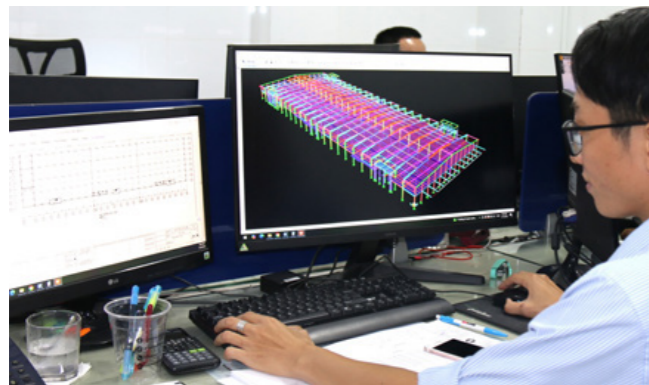
Standardize design documents for review based on technical specifications and issued standards. Fully demonstrate that structural parameters and detailed drawings meet the criteria for approval and technical coordination.



02 PRELIMINARY DESIGN

Initial analysis of structural and load options based on architectural drawings, with a focus on safety, stability, and cost-effectiveness.

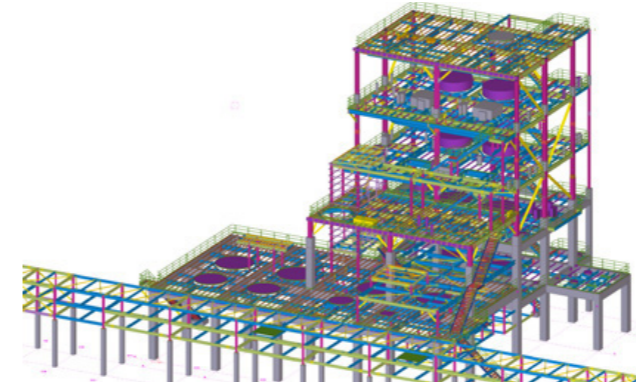
02



05 TEKLA MODELING

Utilize 3D modeling to create detailed machining drawings based on architectural plans and design specifications. Ensure high accuracy, support material control and identify design conflicts.

05



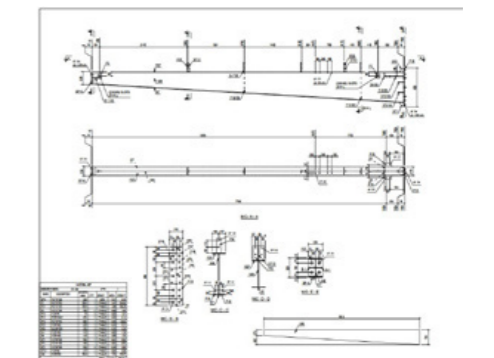
03 QUANTITY ESTIMATION

Perform volume analysis and estimate each item based on technical drawings, construction progress, and a list of materials.

NHAT AN STEEL		BẢO GIÁ KẾT CẤU THÉP		NHAT AN STEEL		
CÔNG TY CƠ KHÍ - XÂY DỰNG NHẬT AN		Hành tư	46, 480 000 000	Địa chỉ	XXXXXXXXXX	
TRỤ SỞ: 10 Đường số 14, KCN Hòa Bình, Quận Bình Chánh, TP. Hồ Chí Minh		Chi nhánh	PHU THUAN	Điện thoại	XXXXXXXXXX	
Số điện thoại: 028 3511 8888		Phone	(24) 351 8888	Website	XXXXXXXXXX	
Email: info@nhatansteel.com		Email	info@nhatansteel.com	Website	XXXXXXXXXX	
BẢNG TỔNG HỢP DỰ TOÁN						
Mô tả / Phần tử	Hệ lượng	Đơn vị	Đơn giá (VNĐ)	Giá trị (VNĐ)	Đơn vị	Đơn vị
PHẦN MÀN MẶT KÉP	1	m ²	1.000.000	1.000.000	10.000.000	m ²
PHẦN VẾ GIANG CỘT - KHUNG KÍ	1	m ²	1.000.000	1.000.000	10.000.000	m ²
PHẦN CỘT THÉP	1	m ²	1.000.000	1.000.000	10.000.000	m ²
PHẦN MÀN THÉP	1	m ²	1.000.000	1.000.000	10.000.000	m ²
TỔNG GIÁ TRỊ DỰ TOÁN				40.000.000		
TỔNG GIÁ TRỊ ƯỚC TÍNH				40.000.000		

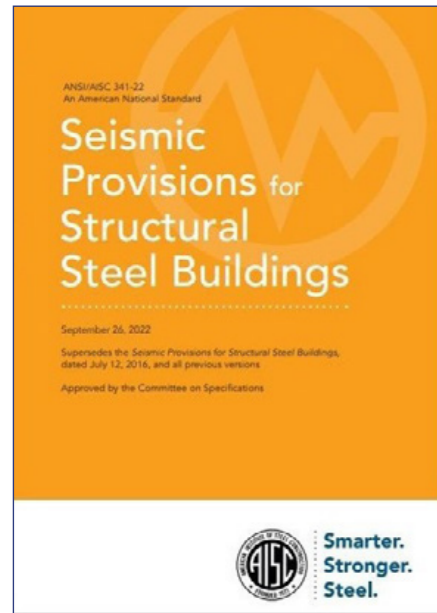
06 FABRICATION DESIGN

Create drawings for production in the workshop, ensuring feasibility and accuracy in processing.

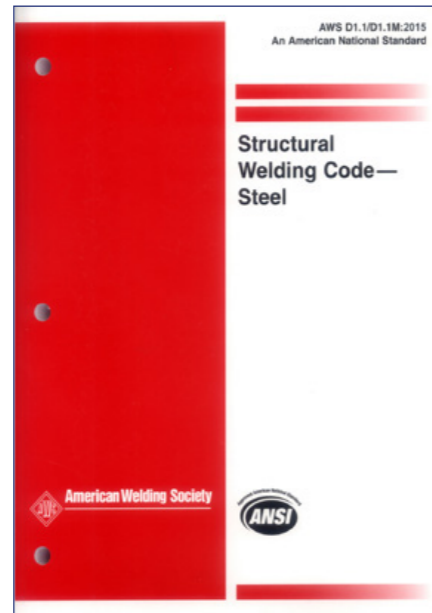


DESIGN STANDARDS

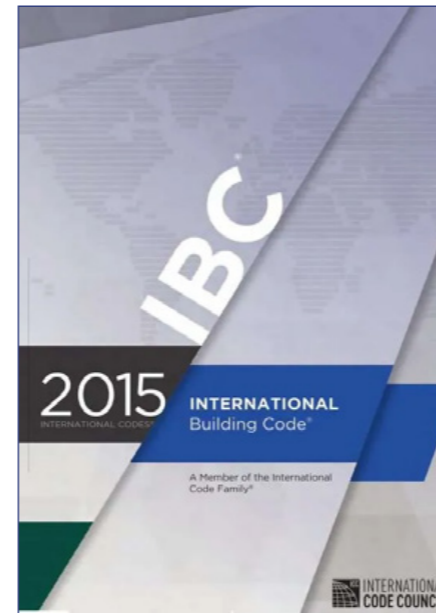
With our experienced team and knowledge of **TCVN**, **ASTM**, **EN**, and **AS** standards, **Nhat An Steel** is confident in meeting all technical requirements and providing optimal solutions for our customers.



AISC 360-22



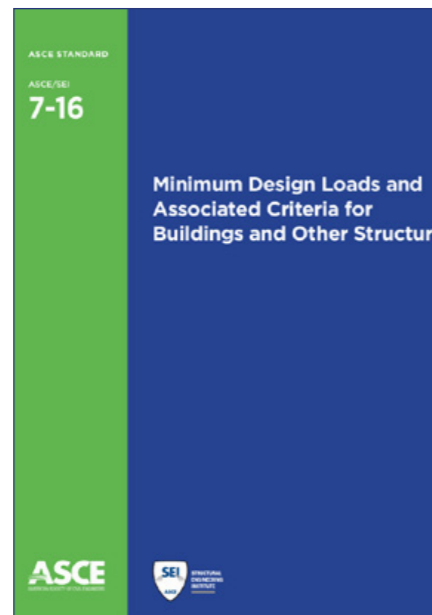
AWS D1.1/D1.1M:2020



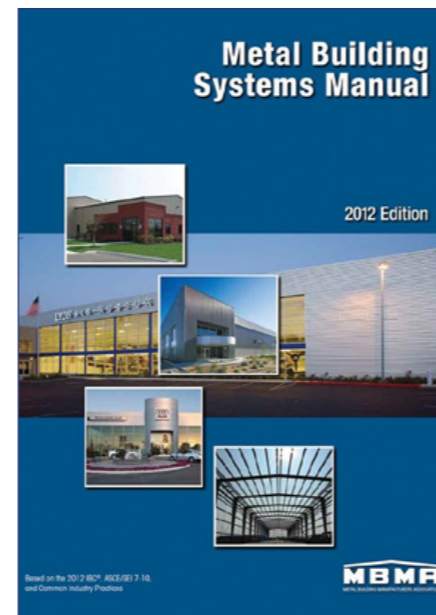
IBC 2024



AISI S100-2020



ASCE/SEI 7-22



MBMA 2018

DESIGN SOFTWARE

STRUCTURAL DESIGN

SAP 2000



ARCHITECTURAL DESIGN

AUTODESK
AutoCAD LT

SketchUp

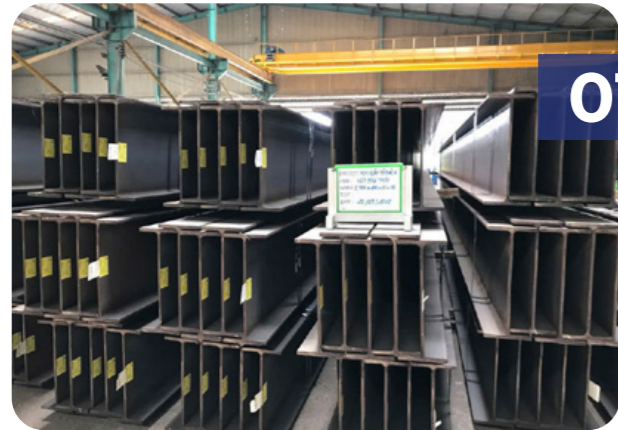
FABRICATION DESIGN

AUTODESK
AutoCAD LT

Tekla
Structures

FABRICATION PROCESS

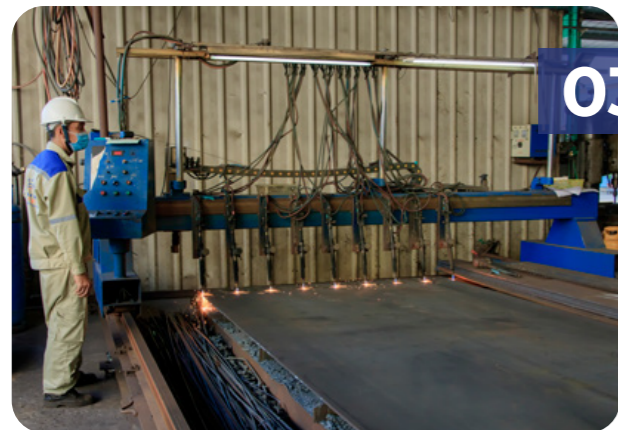
Our modern production lines and closed processing procedures, from cutting and welding to assembly and finishing painting, ensure consistent quality, fast progress, and a flexible response to all types of projects.



01 IMPORT OF RAW MATERIALS



02 TENSILE TESTING



03 CUTTING AND PUNCHING HOLE



04 BUILT-UP AND AUTOMATIC WELDING



05 FITTING-UP AND FINISHING WELDING

The machinery system at Nhat An Steel is installed according to international standards and includes automatic CNC equipment, such as laser cutting machines, automatic welding machines, drilling machines, and shot-blasting machines.

06 SURFACE PREPARATION



07 WELDING INSPECTION

08 PAINTING



09 CHECKING PAINTING THICKNESS

10 PACKAGING AND DELIVERY

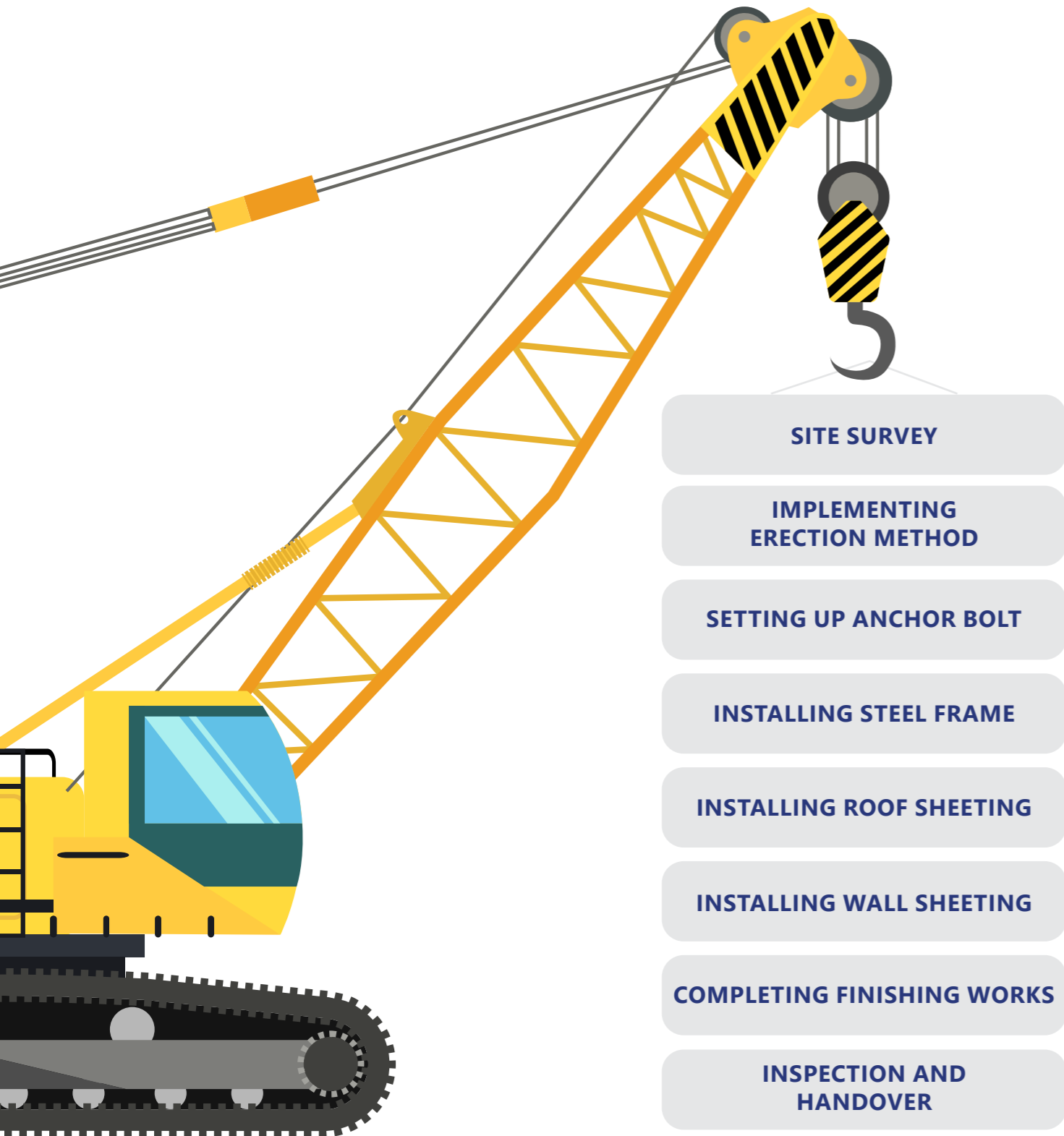
Each stage is checked and approved by QC staff before moving to the next step.

Workers are trained and regularly updated with professional skills.

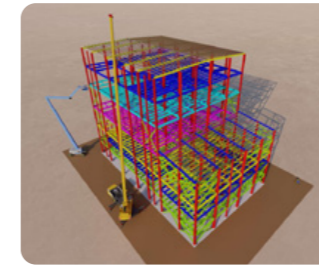


ERECTION PROCESS AND WORK SAFETY

The construction process is organized and carried out with the close coordination of a team of professional engineers. Workers are fully equipped with safety gear and provided with essential training on construction safety before starting work. The primary goal of the Construction Management Board is to meet three key criteria: **"Safety, Timeliness and Construction Quality"**.



Site survey



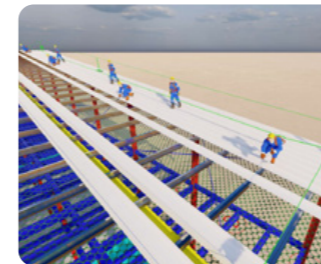
Implementing erection method



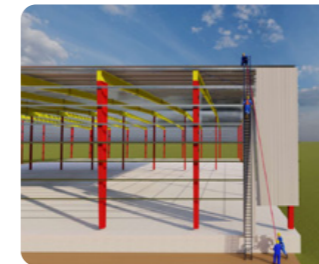
Setting up anchor bolt



Installing steel frame



Installing roof sheeting



Installing wall sheeting



Completing finishing works



Inspection and handover



SAFETY HELMETS

Protect the head from falling objects, impacts, or hazards from above



SAFETY GLASSES

Protect against dust, debris, and sparks to shield eyes during construction



GLOVES

Protect hands from sharp, hot, or slippery objects when handling tools



SAFETY BELT

Prevent falls when working at height



SAFETY SHOES

Protect feet from heavy objects, sharp items, slippery surfaces and electrical hazards



HIGH-VISIBILITY CLOTHES

Helps workers easily recognize and avoid accidents with vehicles or machinery



TOOLS

Utilized in construction



PRODUCT

- COMPLETE CLADDING SYSTEM AND ACCESSORIES
- STANDARD FACTORY MODELS
- STANDARD FRAME SYSTEMS
- STRUCTURAL DETAILS AND OTHER STRUCTURES
- COMPLETED PROTECTION SYSTEMS AND ACCESSORIES



CHARACTERISTICS OF STEEL STRUCTURE

Diverse steel structures with **excellent load-bearing properties** and **design flexibility** are highly capable of many different construction items, from commercial buildings to heavy industrial buildings.

The highly applicable steel structures include: **Floor structures; high tower structures; industrial buildings; large-span buildings; multi-storey building frames; road and railway bridge structures;** etc.



INDUSTRIAL



RESIDENTIAL



COMMERCIAL



INFRASTRUCTURE

ADVANTAGES OF STEEL STRUCTURE PRODUCTS

1



QUICK INSTALLATION AND COST-EFFICIENCY

2



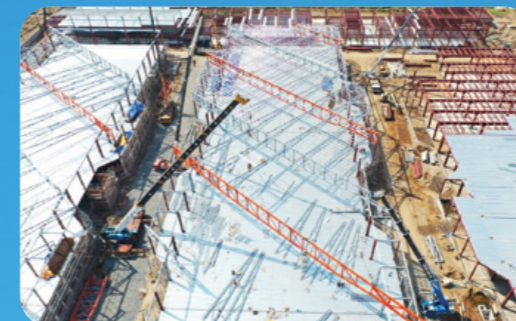
LARGE SPAN CAPABILITY

3



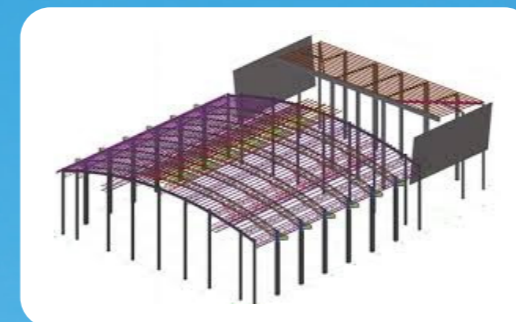
VARIETY IN STRUCTURAL AESTHETICS

4



EASY TO INSTALL, DISMANTLE, RENOVATE AND EXPAND

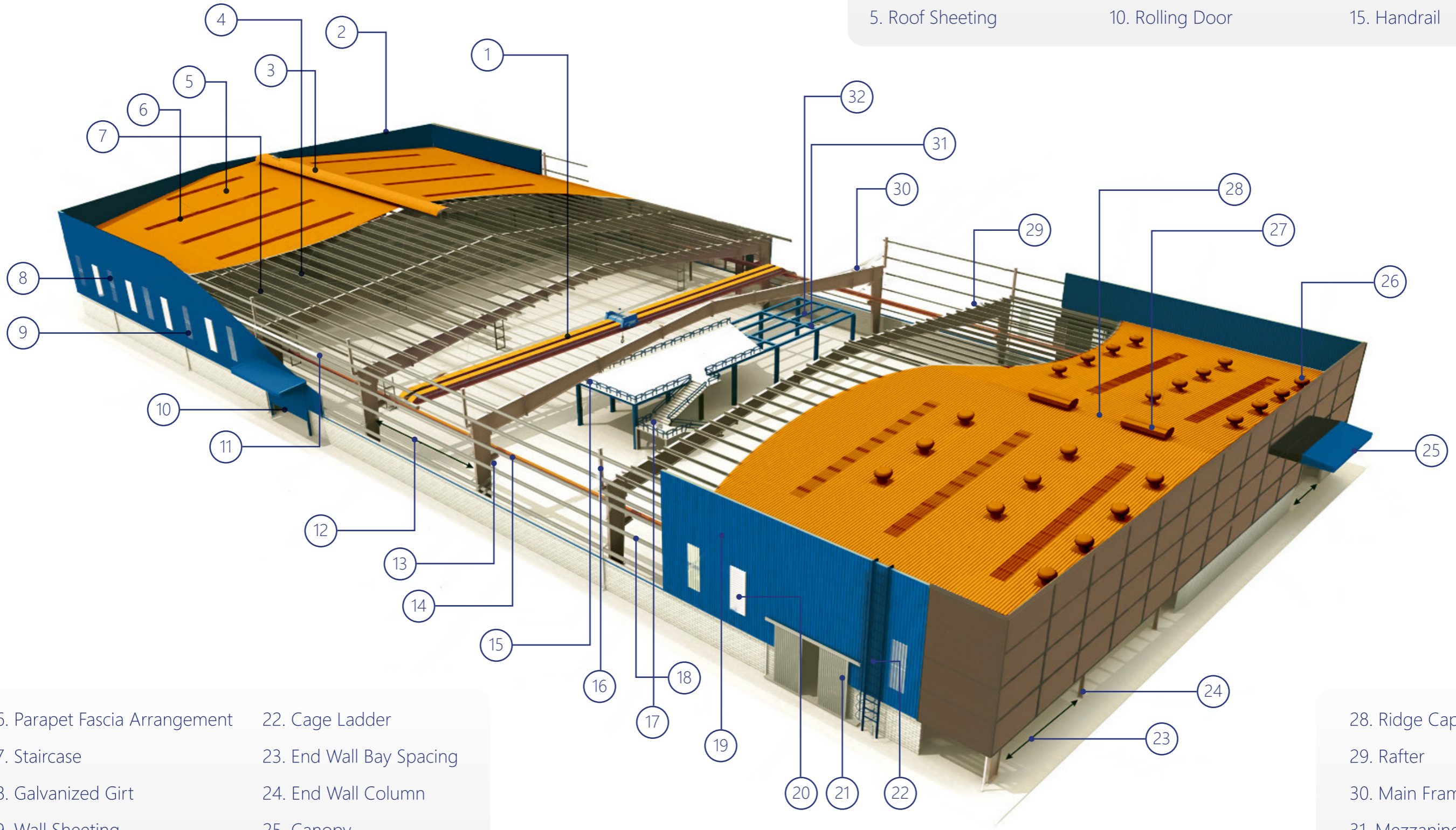
5



LIGHTWEIGHT AND COST OPTIMIZATION

TYPICAL PRE-ENGINEERED STEEL BUILDINGS

- 1. EOT Crane
- 2. Parapet Fascia
- 3. Roof Monitor
- 4. Bracing
- 5. Roof Sheeting
- 6. Skylight
- 7. Purlin
- 8. Wall Light Panel
- 9. Downspout
- 10. Rolling Door
- 11. Eave Gutter
- 12. Sidewall Bay Spacing
- 13. Crane Bracket
- 14. Crane Beam
- 15. Handrail



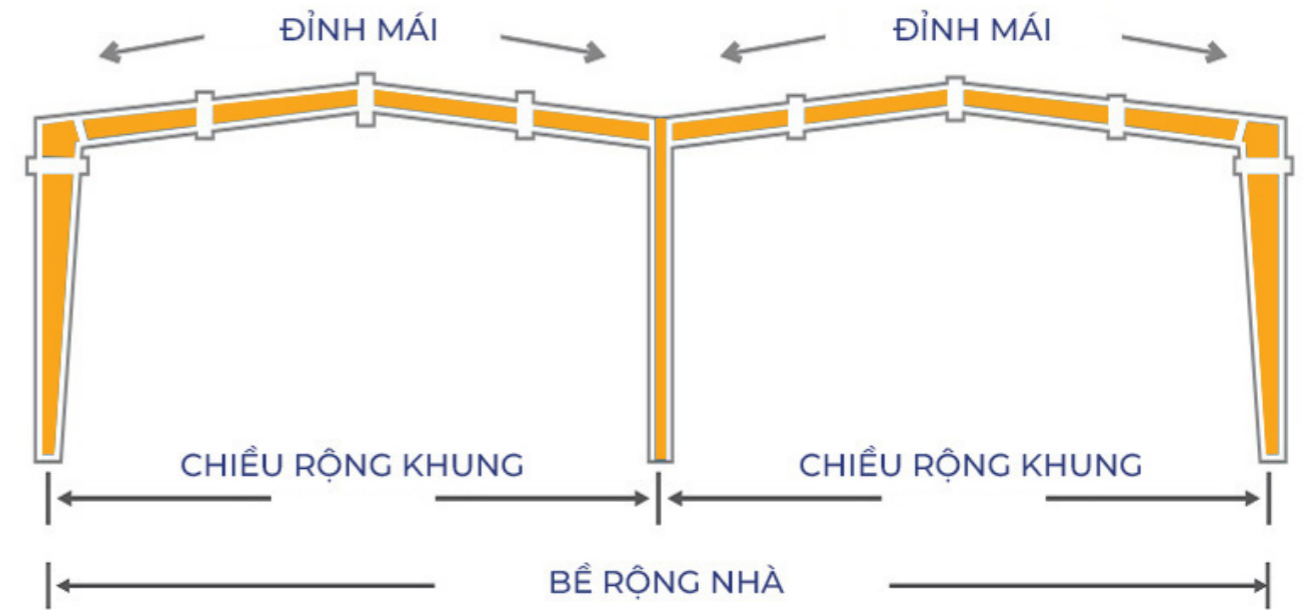
- 16. Parapet Fascia Arrangement
- 17. Staircase
- 18. Galvanized Girt
- 19. Wall Sheeting
- 20. Louver
- 21. Double Sliding Door
- 22. Cage Ladder
- 23. End Wall Bay Spacing
- 24. End Wall Column
- 25. Canopy
- 26. Turbo Ventilator
- 27. Ridge Ventilator

- 28. Ridge Cap
- 29. Rafter
- 30. Main Frame Column
- 31. Mezzanine Beam
- 32. Mezzanine Joist

STANDARD FRAMING SYSTEMS



Clear Span



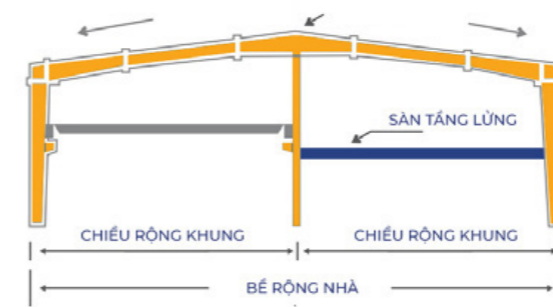
Multi Gable



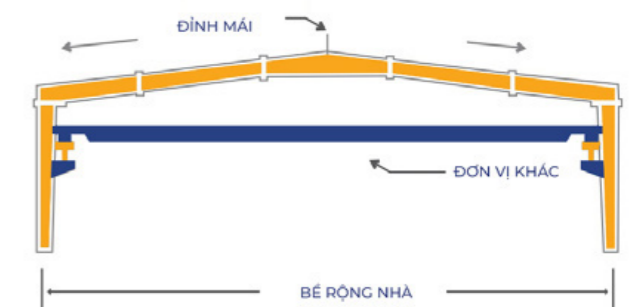
Multi Span I



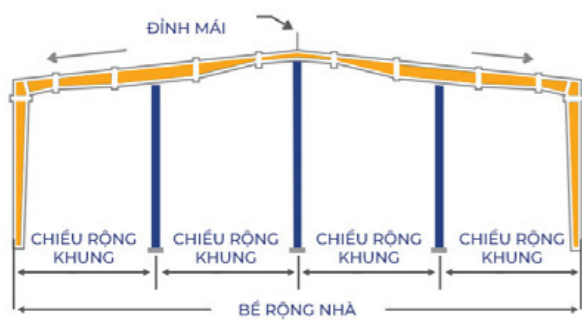
Multi Span II



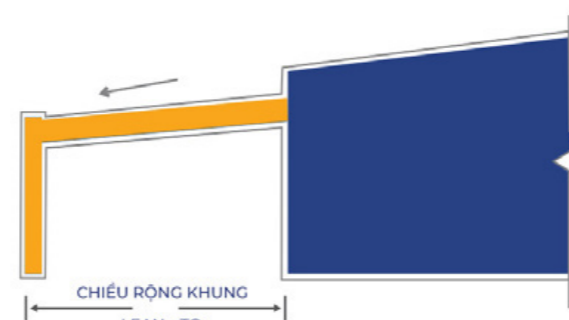
Clear span with Crane & Mezzanine (Steel Column)



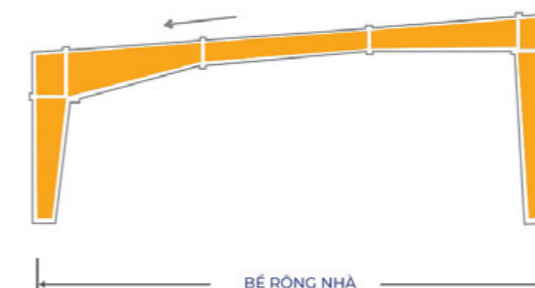
Clear span with Crane



Multi Span III



Lean - To



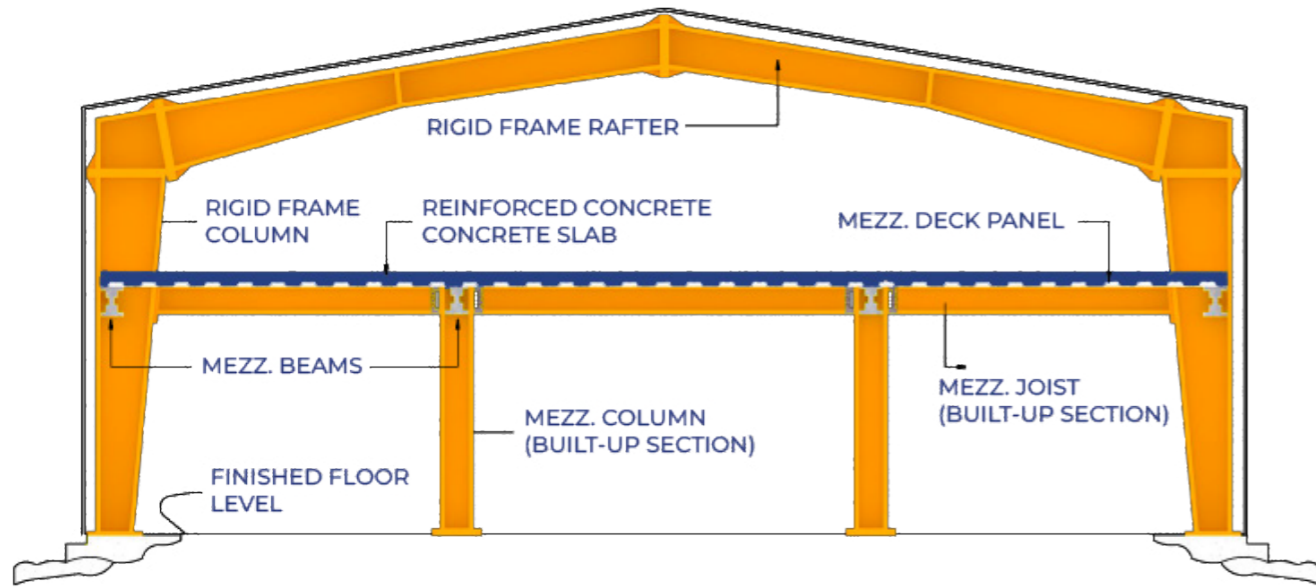
Single Slope



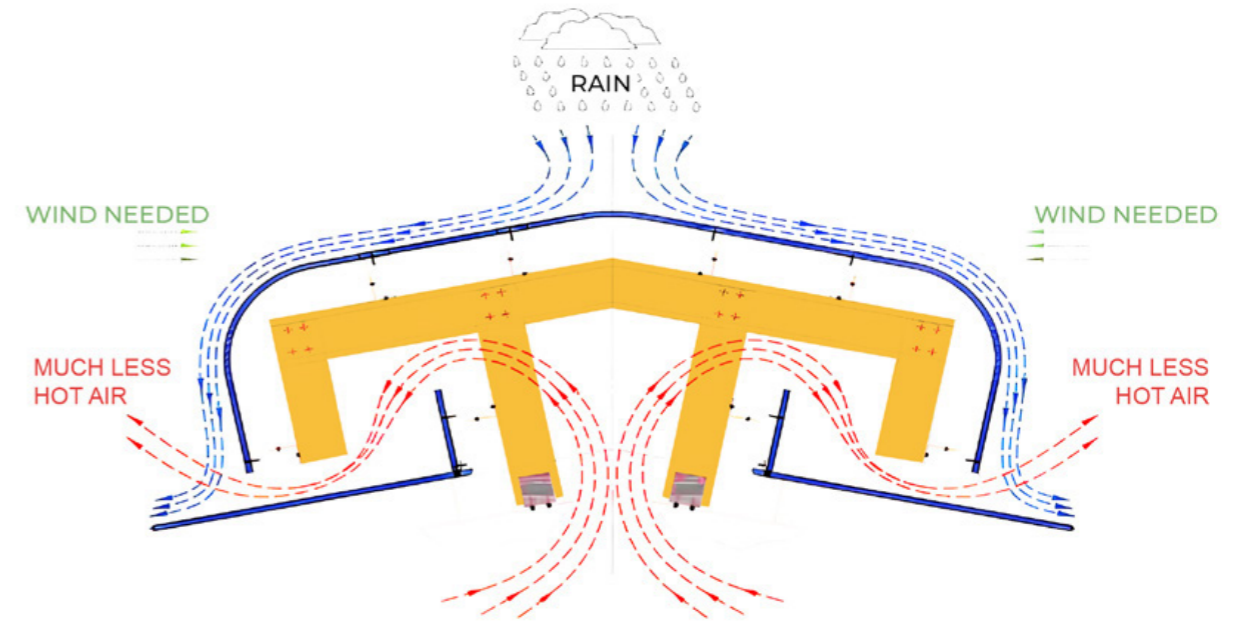
Multi Span I with Crane & Mezzanine (RC Column)

STRUCTURE DETAIL

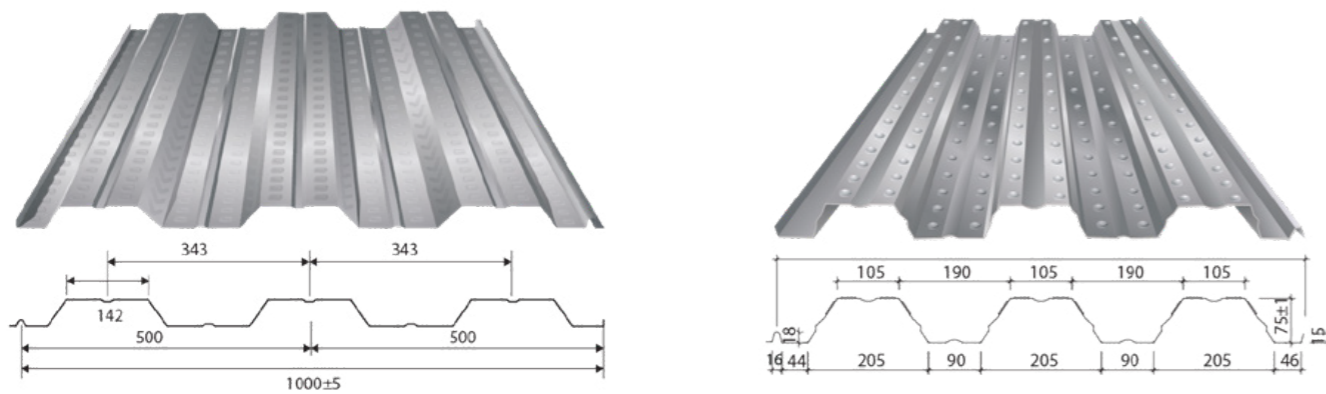
Mezzanine Slab



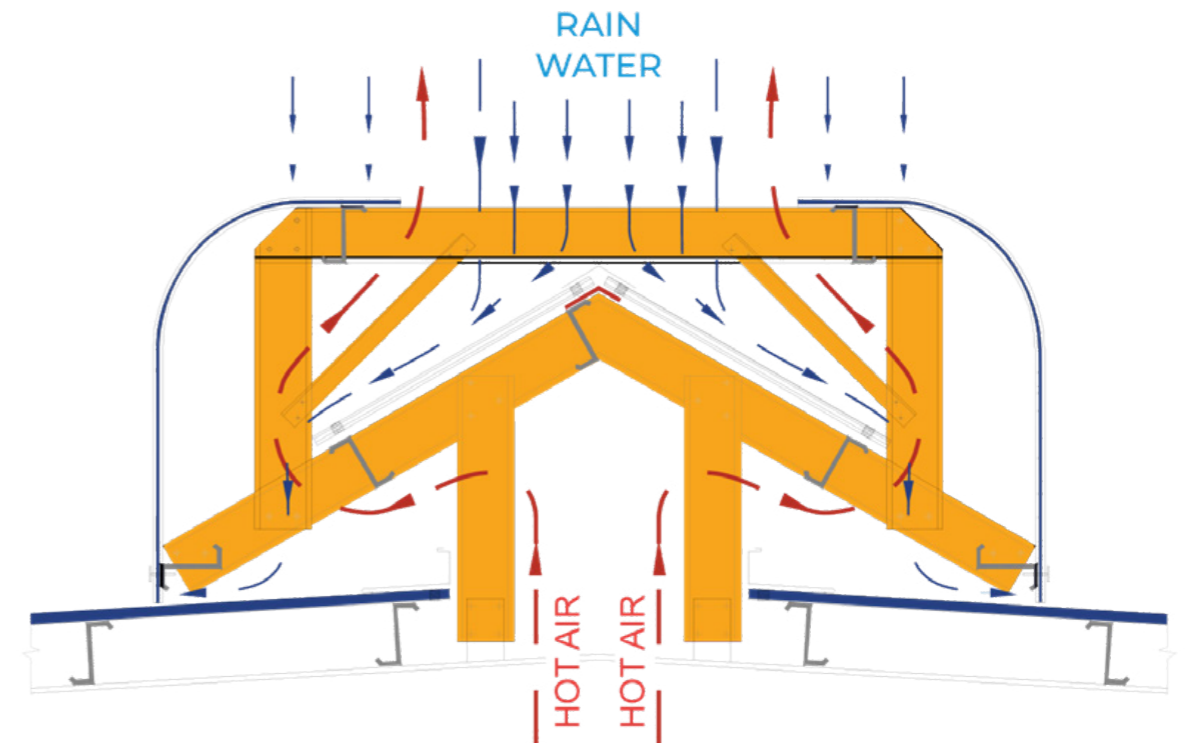
Jack Roof Monitor



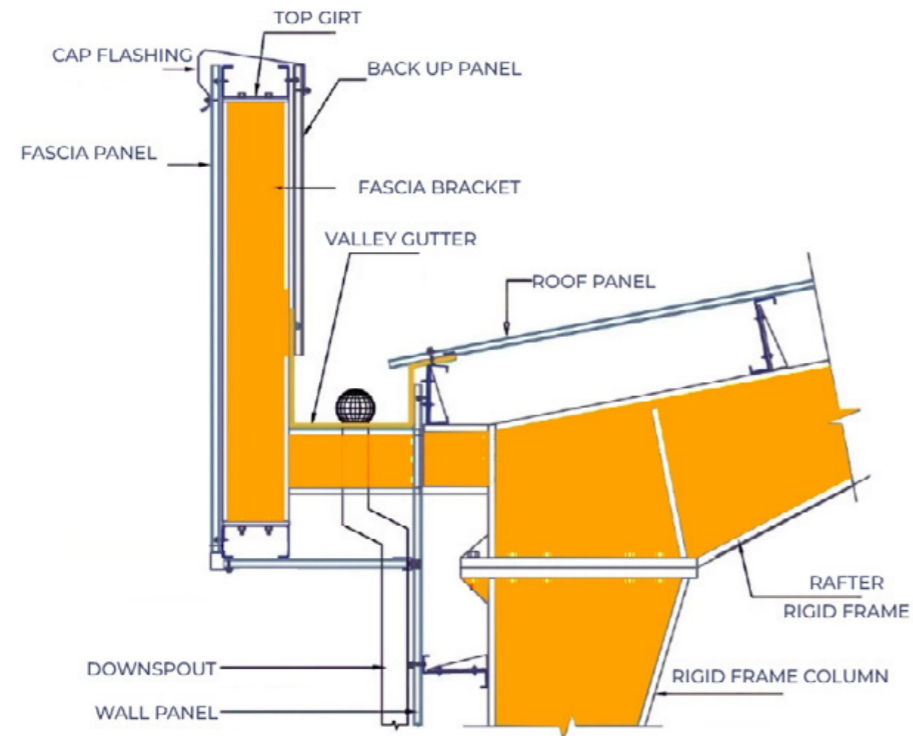
Decking Panel and Shear Stud



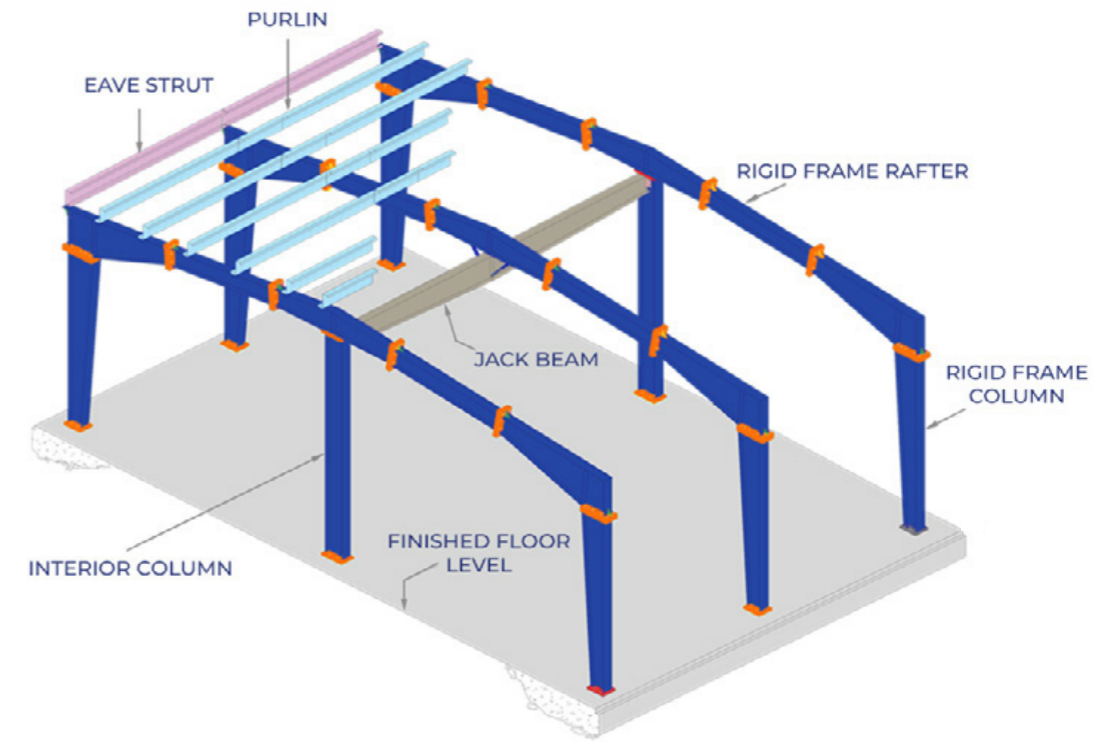
Ridge Vent Monitor



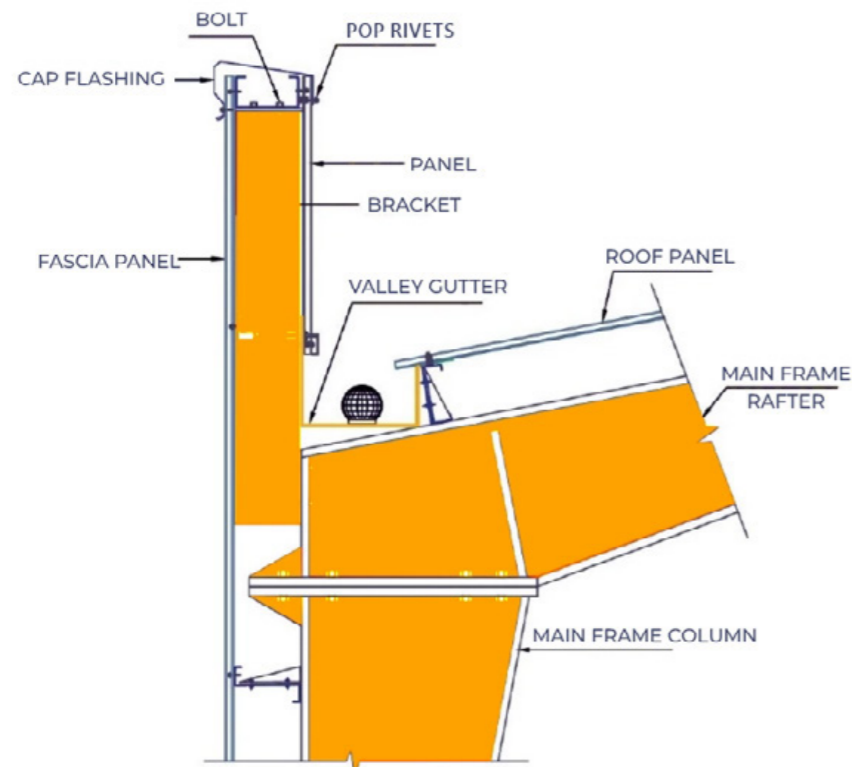
Vertical Fascia



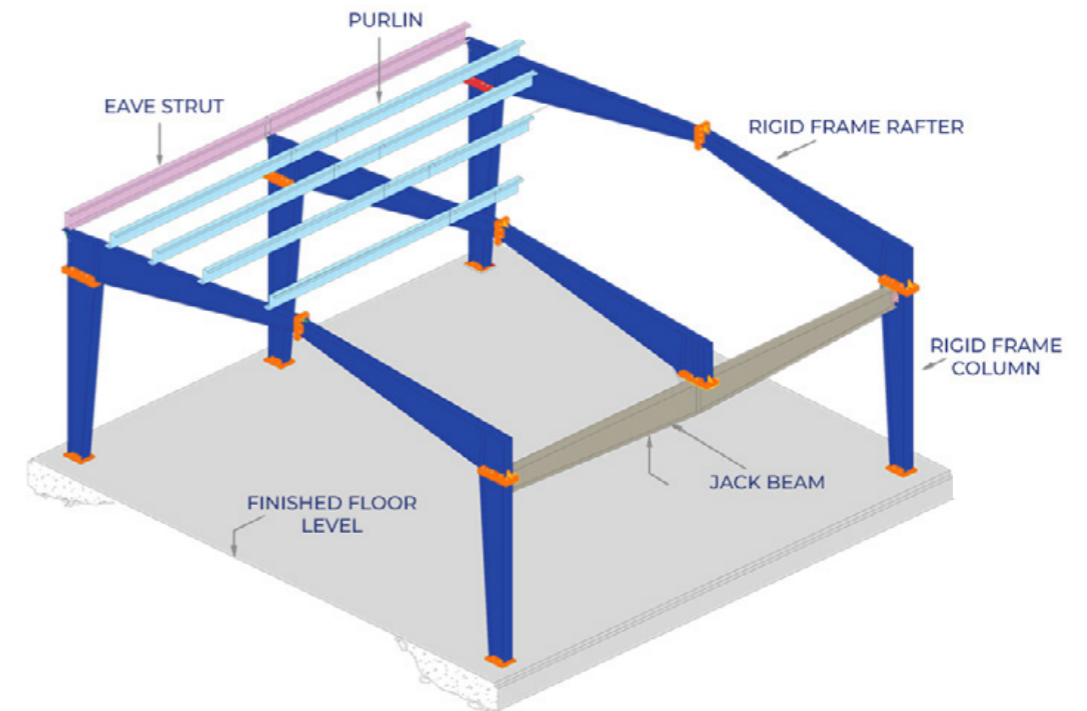
Jack Beam at Interior Column



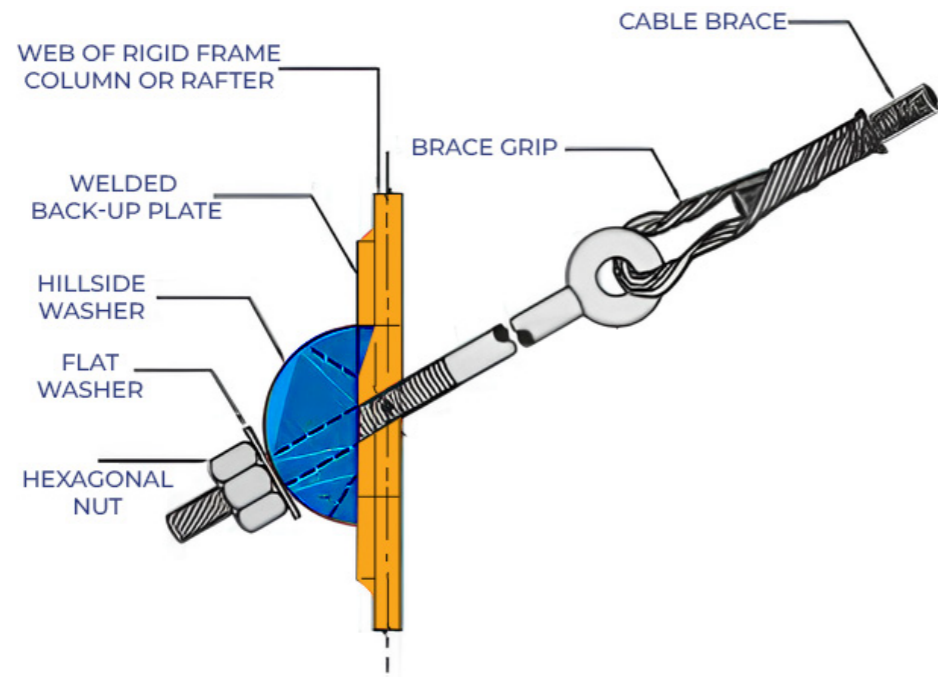
Parapet Fascia



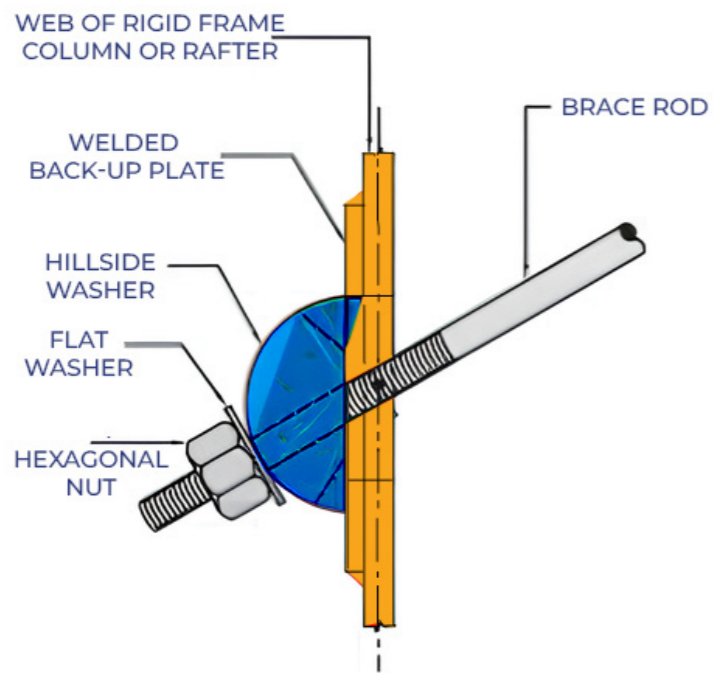
Jack Beam at Sidewall



Bracing Detail

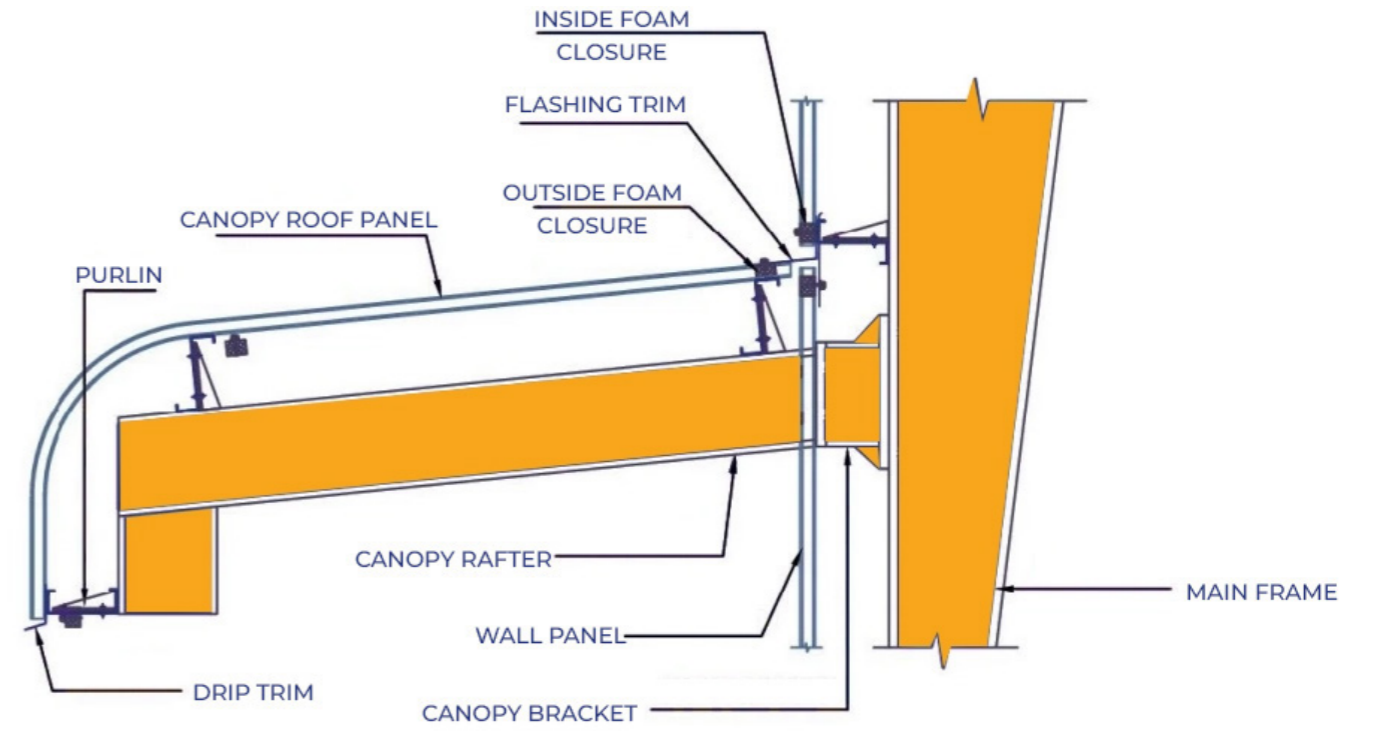


Cable Bracing

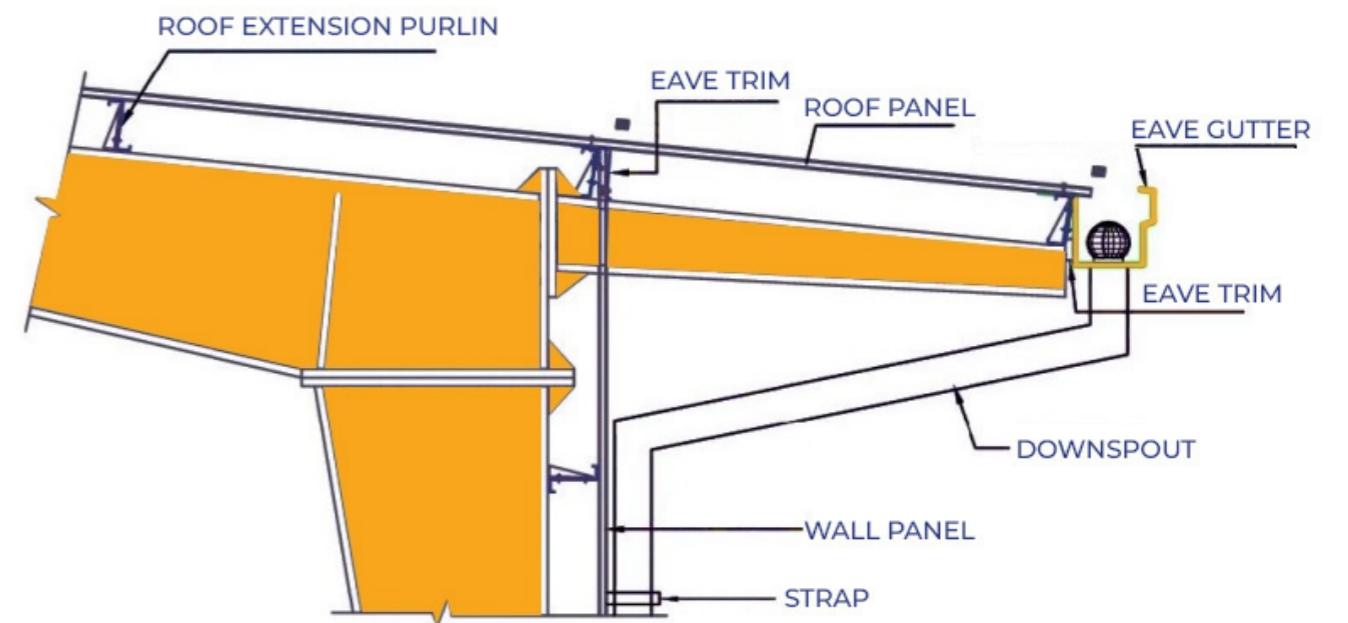


Rod Bracing

Canopy



Roof Extension



Other products



Canopy



Kingpost



Cage Ladder



Conveyor



Pipe-Rack



Checker Floor



Grating Floor



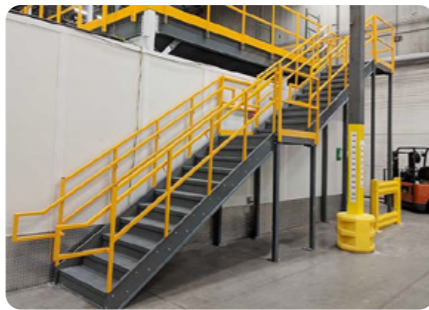
Linkway



Partition



Walkway



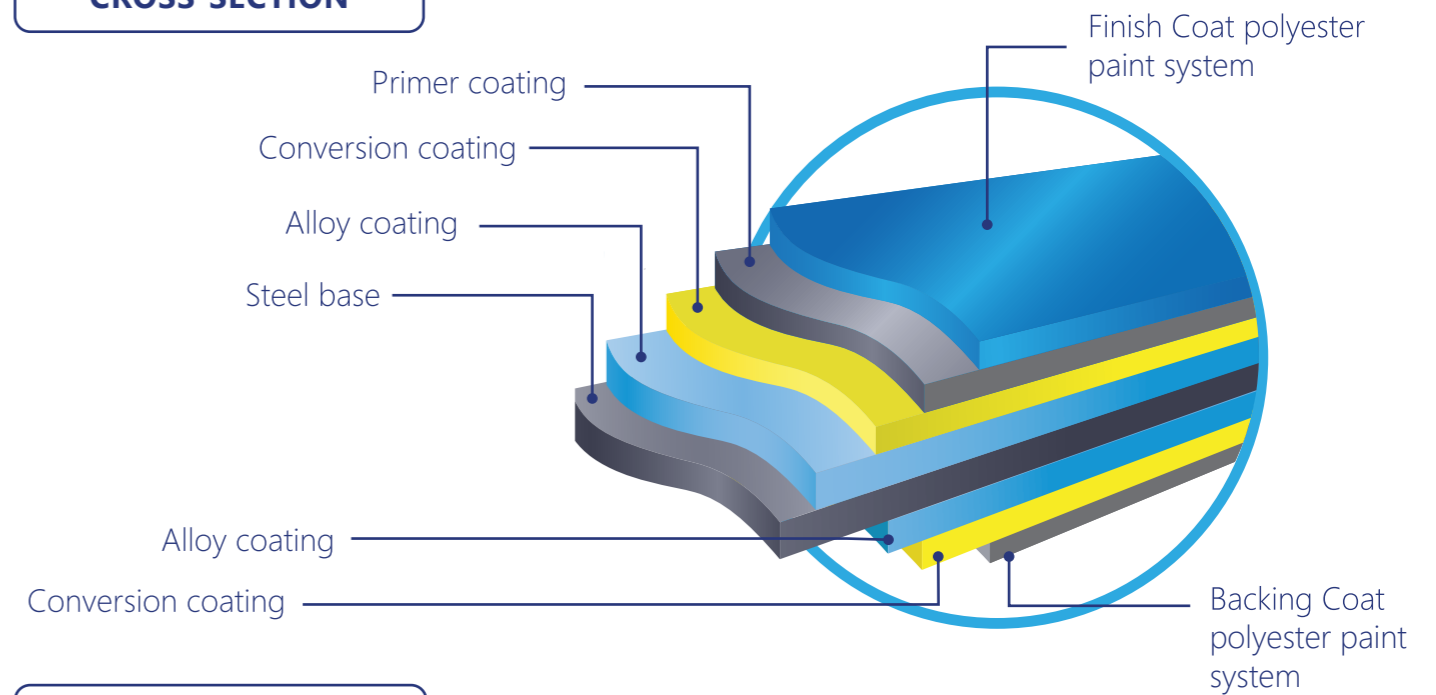
Staircase



Handrail

CLADDING SYSTEMS

CROSS-SECTION



TECHNICAL PARAMETER

DETAILS	MEASUREMENTS (mm)
Base Metal Thickness (BMT)	0.35mm – 0.6mm
After Painted Thickness (APT)	0.40mm – 0.65mm
Total Coated Thickness (TCT)	0.43mm – 0.7mm
Raw material coil width	1200mm
Tolerance on effective cover width	± 5mm
Tolerance on rib height	± 2mm

Designation: Corrugated Sheet Specifications
Profile Type (Effective Cover Width – Rib Height – Number of Ribs)

SUPPLIER



BLUESCOPE



TON DONG A

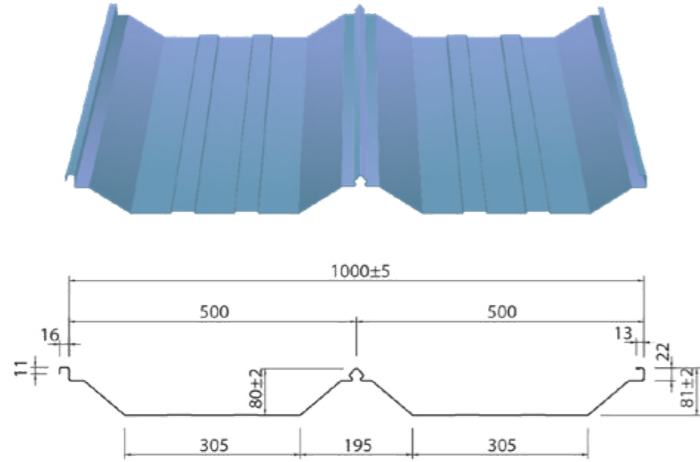


TÔN NAM KIM



HOA SEN GROUP

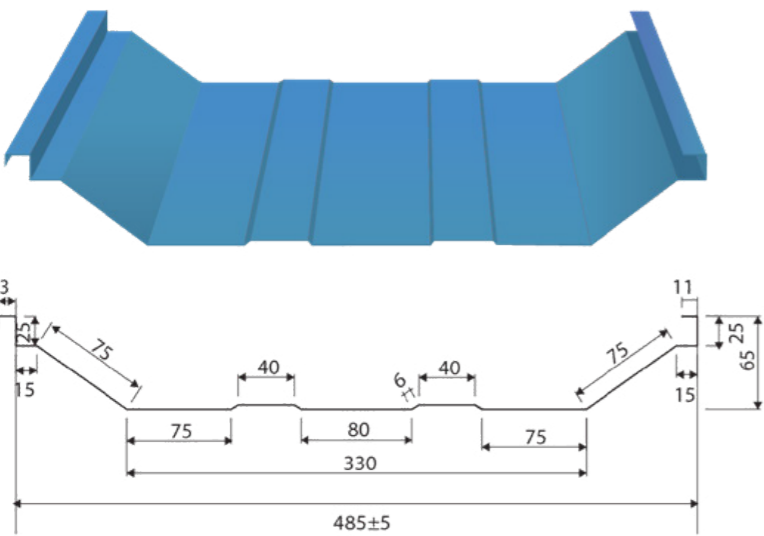
Roof and Wall



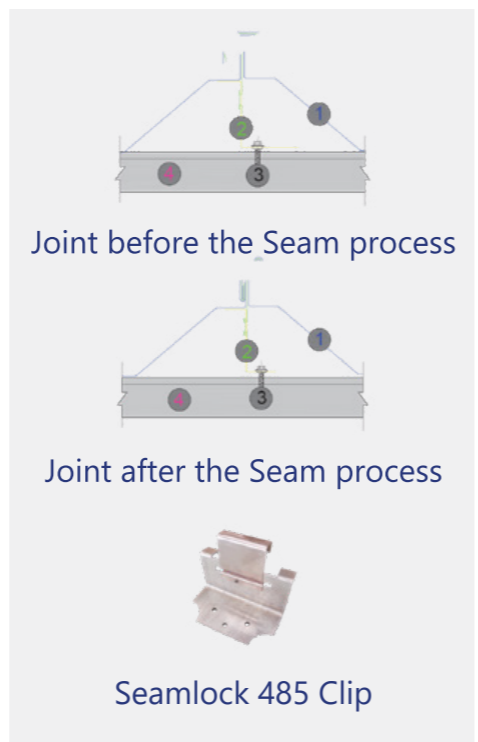
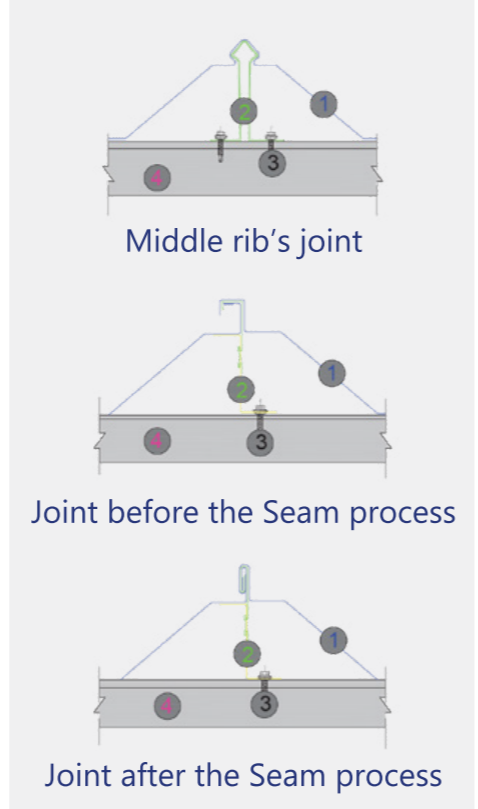
Seamlock (1000-81-3)



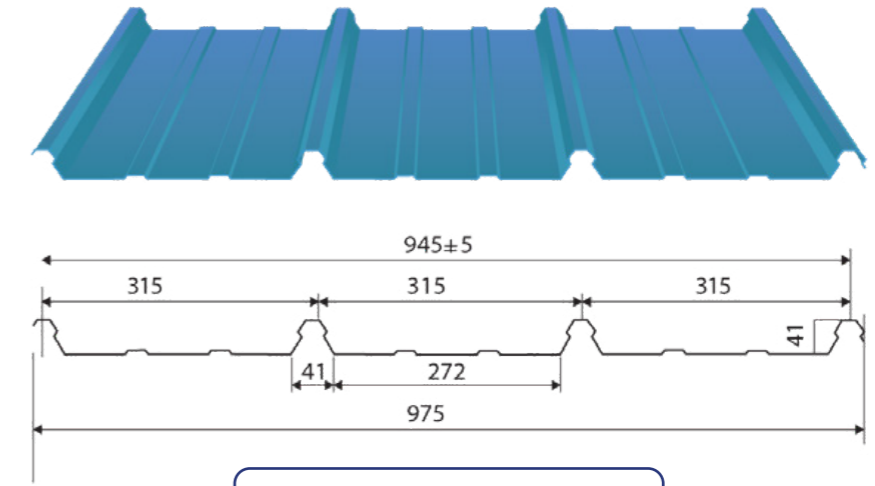
Seamlock 1000 Clip



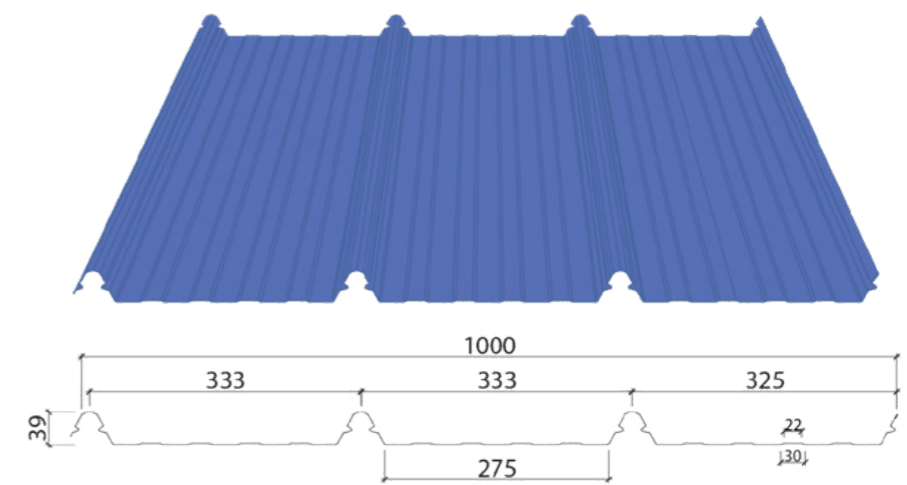
Seamlock W (485-65-2)



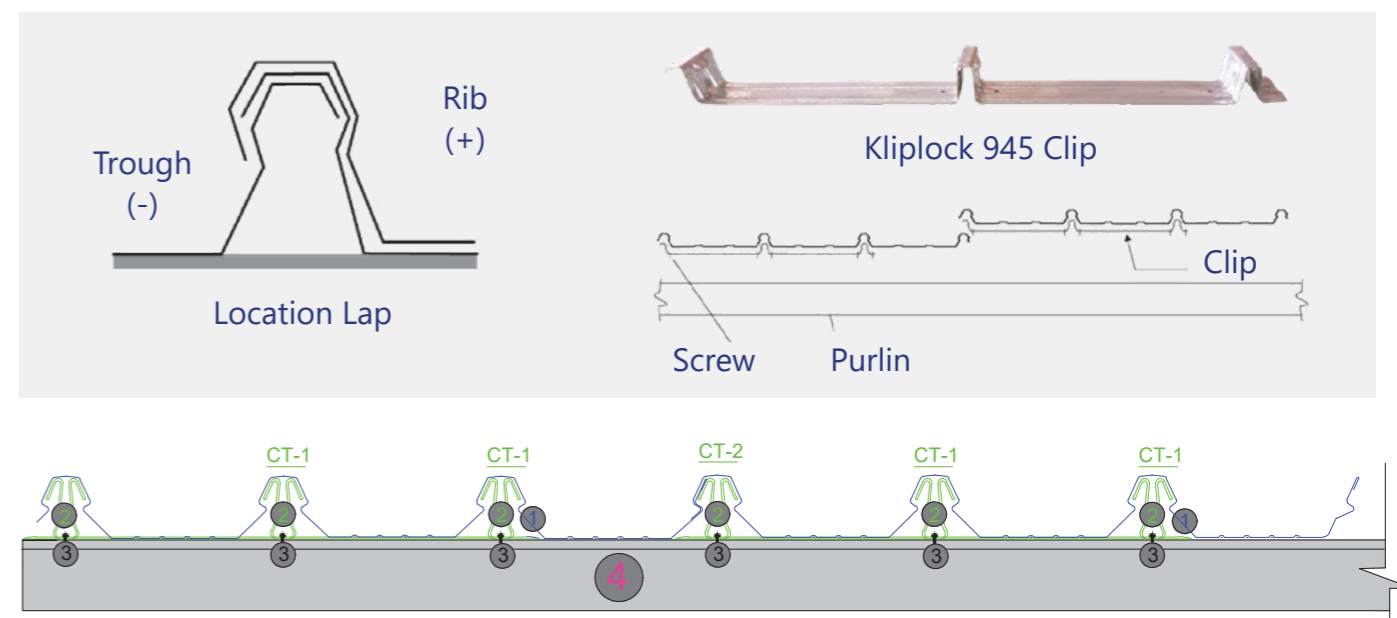
- ① Roofing Seamlock
- ② Seamlock Clip
- ③ Screws
- ④ Purlin



Kliplock (945-41-4)

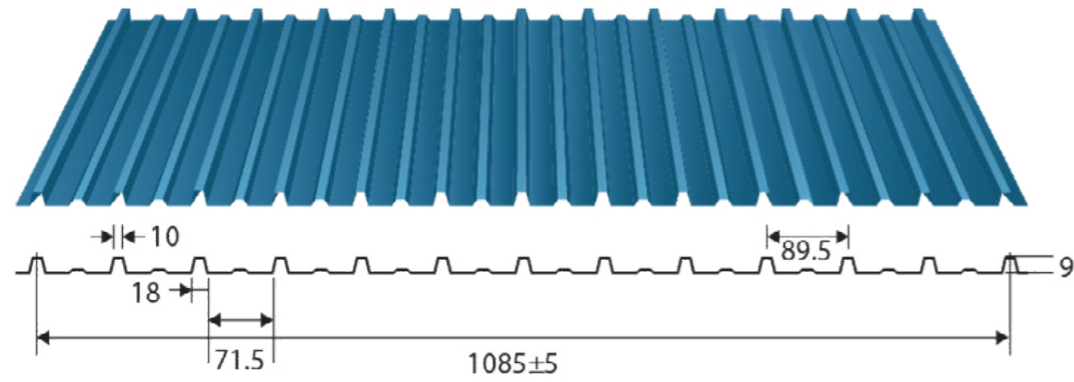


Kliplock (1000-40-4)

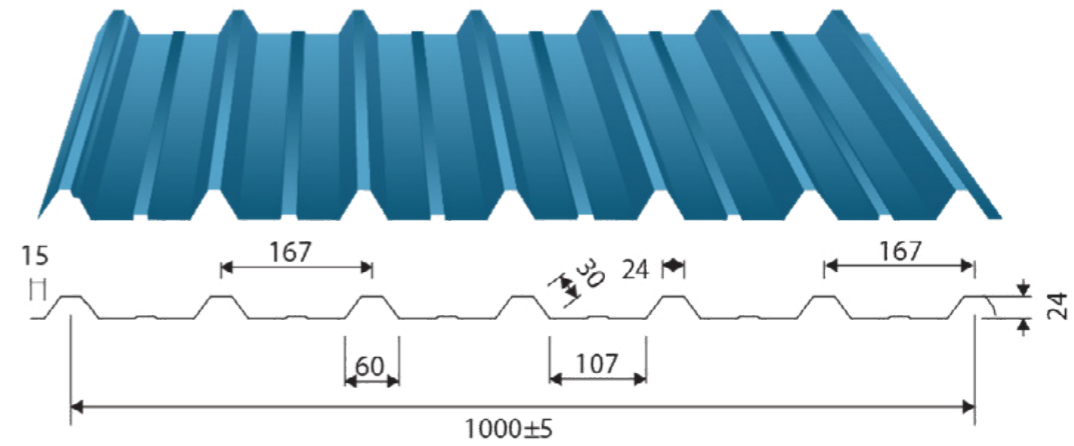


- ① Roofing Kliplock
- ② Kliplock Clip
- ③ Screws
- ④ Purlin

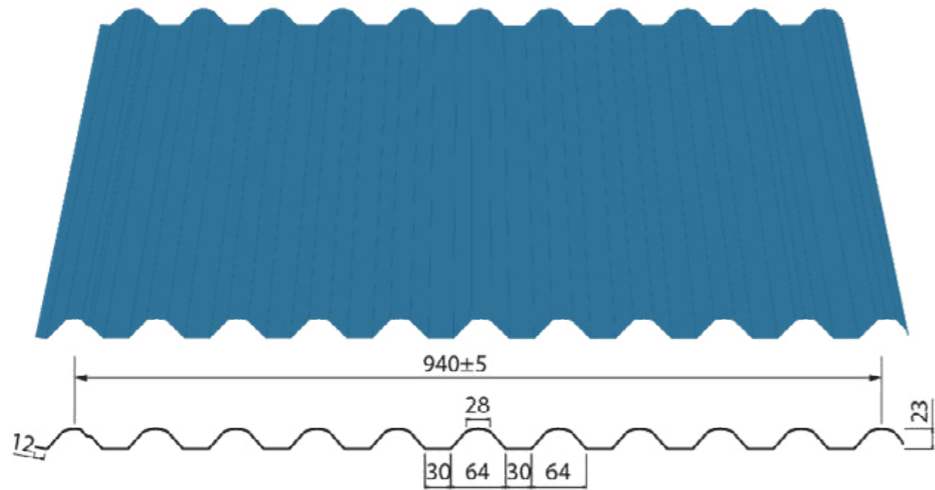
Roof and Wall



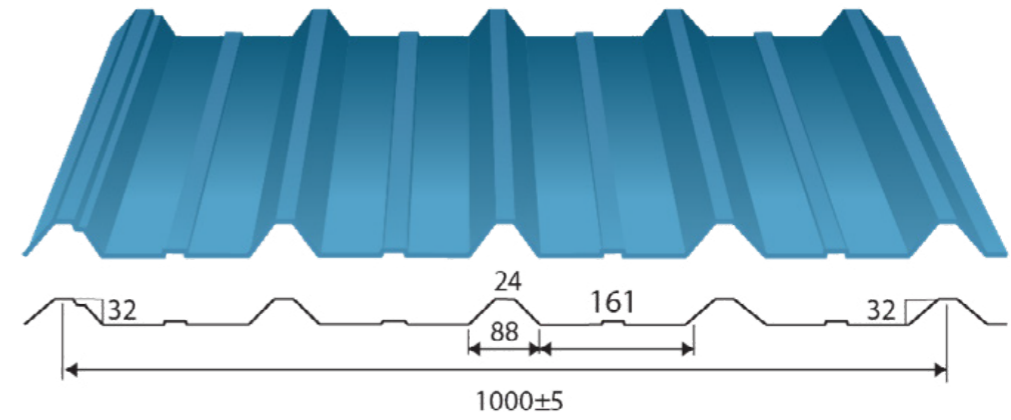
13 Ribs (1085-9-13)



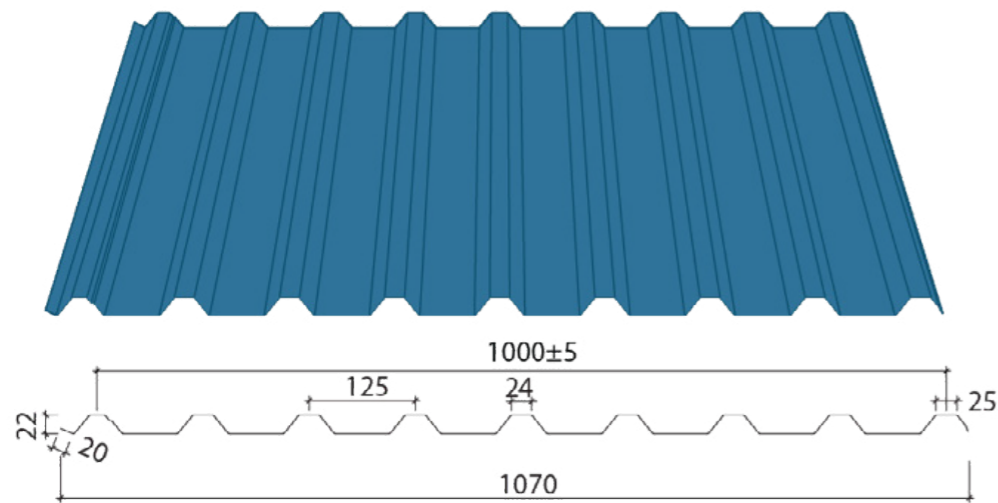
7 Ribs (1000-24-7)



11 Ribs (940-23-11)



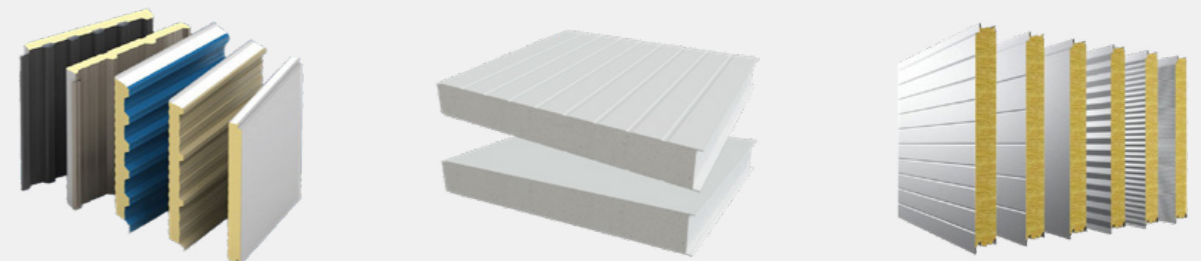
5 Ribs (1000-32-5)



9 Ribs (1000-22-9)

SANDWICH PANEL (PU/PIF/EPS/ROCKWOOL)

THICKNESS (mm)	50 / 75 / 100 / 150
SPECIFICATION	5 RIBS / 9 RIBS / TÔN PHẪNG



Accessories



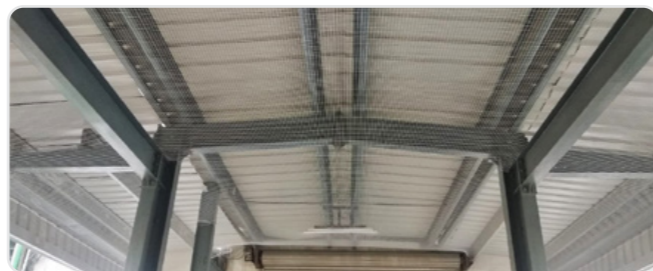
Rolling Door



Double Sliding Door



Louver



Anti-Bird Mesh



Anchor Bolt



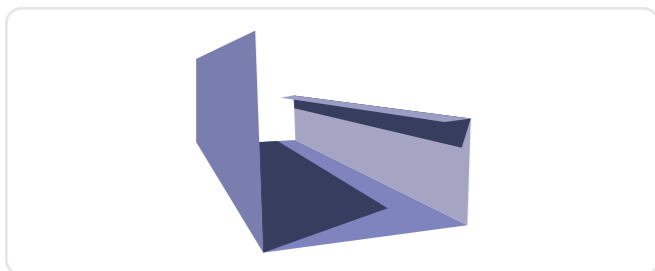
Connection Bolts



Expansion/Chemical Bolt



Screws



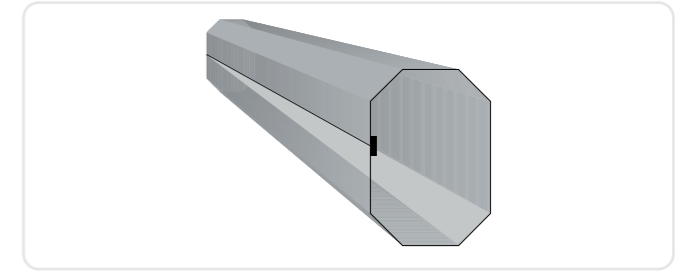
Gutter



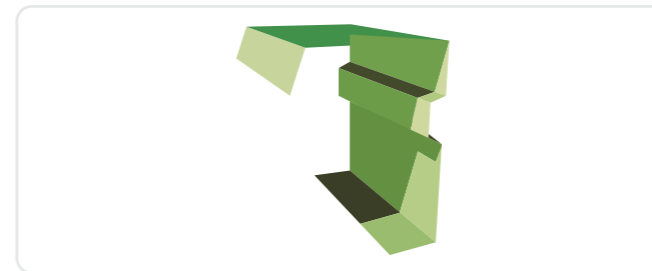
Inox Trash



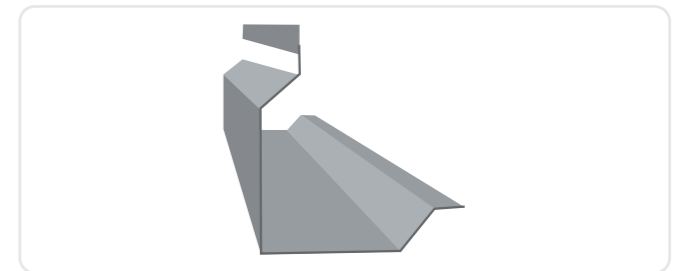
PVC Downspout



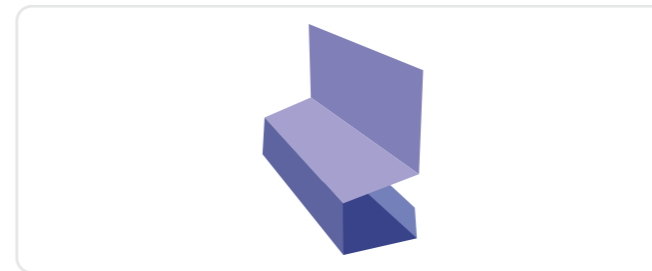
Steel Downspout



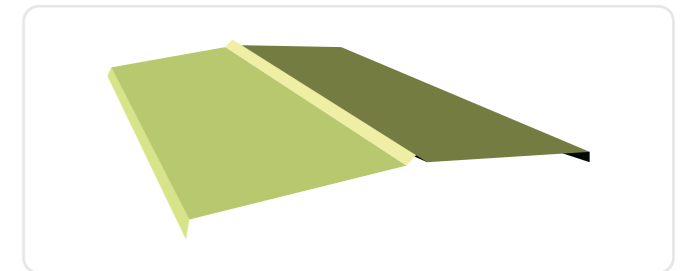
Oasis Gable Trim



Corner Trim



Button Trim



Ridge Capping



Rockwool Insulation



Fiberglass Insulation



AirBubble Insulation



Insulation Support Mesh

PROJECTS





- TYPICAL PROJECTS
- MULTI-PHASE PROJECTS
- OTHER PROJECTS

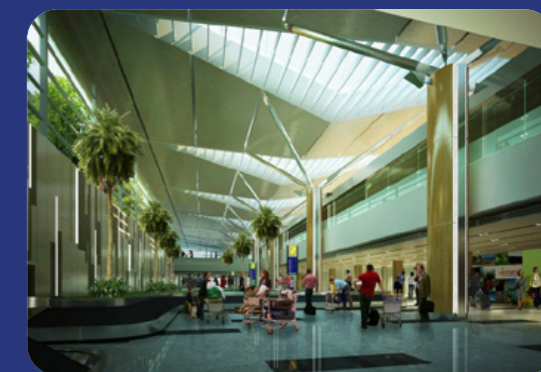
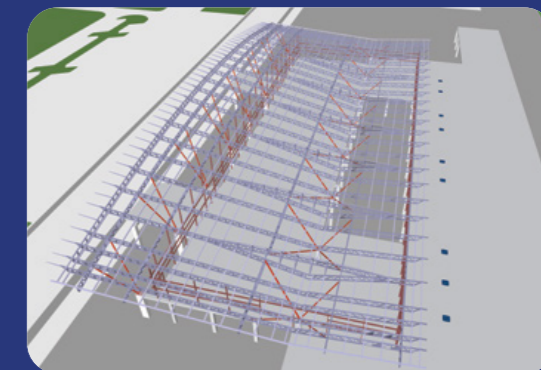


Typical Projects

PASSENGER TERMINAL PHU QUOC INTERNATIONAL AIRPORT

The project features a complex truss design and challenging transportation conditions. **Nhat An Steel** completed the project after a total of 60 days of fabrication and 40 days of installation. Successfully completing the **Phu Quoc International Airport** project is one of the proud milestones of **Nhat An Steel**. Additionally, it signifies the transformation of **Nhat An Steel** in the construction market.

-  **Tonnage:** 1,500 tons
-  **Location:** Phu Quoc City, Kien Giang
-  **Year:** 2011
-  **Investor:** Airports Corporation of Vietnam Joint Stock Company



Typical Projects

PHU THO CIRCUS AND MULTI-PURPOSE PERFORMING CENTER

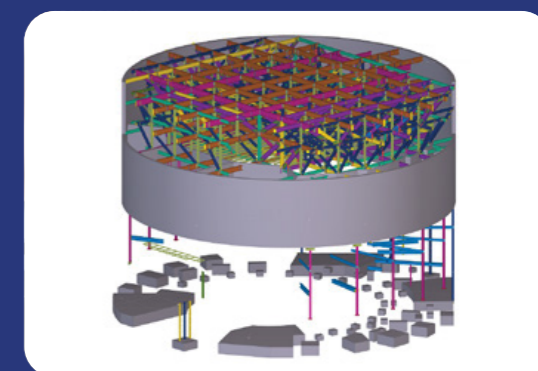
Among the 50 typical projects of the **Ho Chi Minh City Department of Culture and Sports**, **Phu Tho Circus and Multifunction Performance Center** features a main auditorium with a capacity of 2,000 seats. **Nhat An Steel** is proud to be the contractor responsible for the entire steel structure of the project, which includes the supply and installation of composite floor structures for the **6th, 7th, and 8th floors (spanning 55 meters)**, a temporary floor structure, a facade structure, and various auxiliary components.

 **Tonnage:** 1,750 tons

 **Location:** District 11, Ho Chi Minh City

 **Year:** 2023

 **Investor:** Ho Chi Minh City Department of Culture and Sport - Management Board of Industrial and Civil Engineering Construction and Investment Projects.




Typical Projects


KUMHO TIRES FACTORY

Kumho Tire is among the top 5 leading FDI enterprises in manufacturing and exporting automobile tires to Vietnam. This is the largest tonnage project that **Nhat An Steel** has undertaken since 2007, with a total tonnage of **6,000 tons**. The factory is designed to be nearly 1 km long.

 **Tonnage:** 6,000 tons

 **Location:** My Phuoc III Industrial Park, Binh Duong Province

 **Year:** 2007

 **Investor:** Kumho Tire Viet Nam Co., Ltd




Typical Projects

TOSOH VIETNAM POLYURETHANE PROJECT

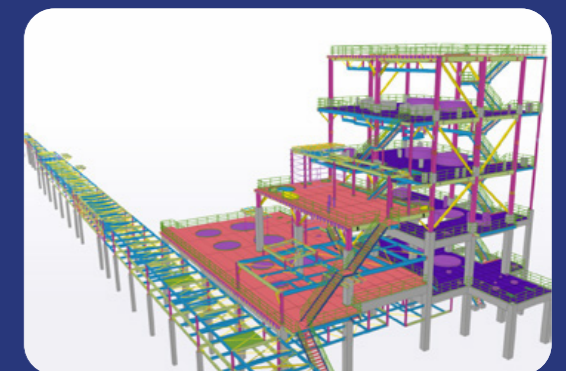
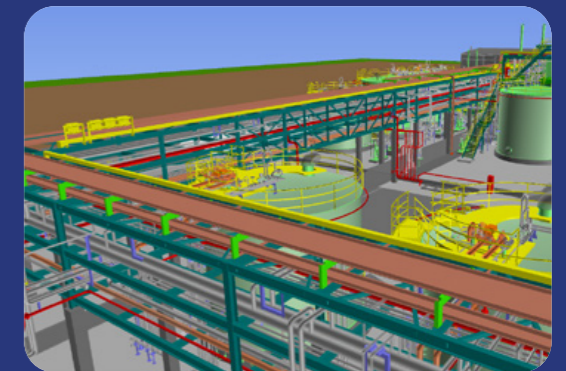
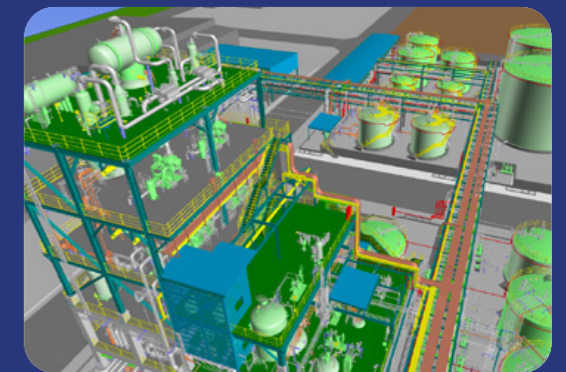
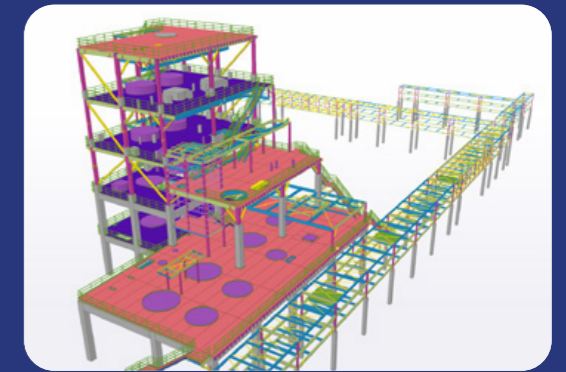
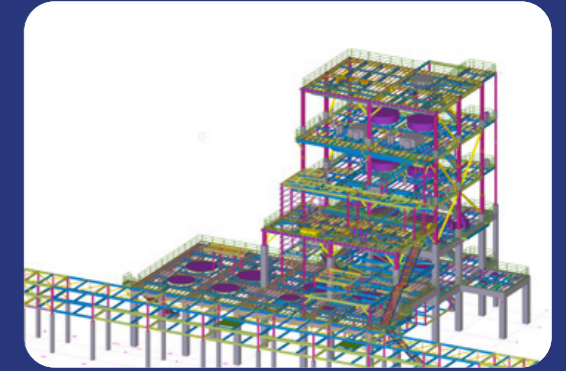
The project has a total investment capacity of **4,230 billion VND** from **Tosoh Corporation**, one of the leading names in the chemical industry in Japan. This project complex is classified as Class-I and comprises large-scale and stringent requirements of the Investor and a unit of General Contractor.

 **Tonnage:** 800 tons

 **Location:** Phu My III Industrial Park, Ba Ria-Vung Tau Province

 **Year:** 2024

 **Investor:** Tosoh Corporation




Typical Projects


VIETNAM CHINGLUH SHOES FACTORY

The project covers a total construction area of **70,000 square meters** with an architectural and structural design that is visually appealing and creative. The optimized design utilizes the factory roof space for solar panels.

 **Tonnage:** 1,500 tons

 **Location:** Binh Minh Industrial Park, Vinh Long Province

 **Year:** 2019

 **Investor:** Vietnam Chingluh Shoes Co.,LTD



Multi-phase Projects



8,500 tons - 200,000 m²

Phase: 2007 | 2008 | 2009 | 2010 | 2014 | 2015

Location: Nhon Trach Industrial Park, Dong Nai Province



3,000 tons - 75,000 m²

Phase: 2008 | 2009 | 2010 | 2013 | 2015 | 2017 | 2022

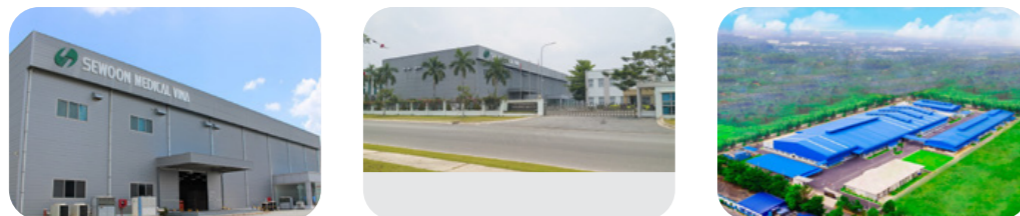
Location: Long Thanh Industrial Park, Dong Nai Province



8,000 tons - 180,000 m²

Phase: 2005 | 2016 | 2017 | 2018 | 2020

Location: Nhon Trach I Industrial Park, Dong Nai Province
Thach Loc Industrial Park, Kien Giang Province



2,000 tons - 40,000 m²

Phase: 2013 | 2015 | 2016 | 2017 | 2018

Location: Que Vo Industrial Park, Dong Nai Province



7,000 tons - 90,000 m²

Phase: 2017 | 2019 | 2020 | 2021 | 2025

Location: Loc An Industrial Park, Dong Nai Province



1,800 tons - 30,000 m²

Phase: 2016 | 2017 | 2022

Location: Hi-Tech Industrial Park, Ho Chi Minh City



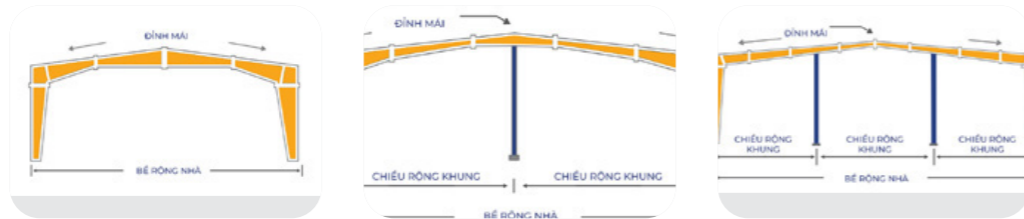
Multi-phase Projects

PROMAX

3,000 tons - 65,000 m²

Phase: 2012 | 2014 | 2015 | 2016 | 2017 | 2021 | 2023

Location: Long Thanh Industrial Park, Dong Nai Province



1,200 tons - 30,000 m²

Phase: 2016 | 2018 | 2020

Location: Tan Tao Industrial Park, Binh Tan District, Ho Chi Minh City.
Vinatex Industrial Park, Dong Nai Province



DAE MYUNG
DAE MYUNG CHEMICAL

2,000 tons - 40,000 m²

Phase: 2017 | 2018 | 2019 | 2020 | 2021

Location: Long Thanh Industrial Park, Dong Nai Province



HYUNDAI
WELDING

1,500 tons - 30,000 m²

Phase: 2018 | 2019 | 2021

Location: Nhon Trach V Industrial Park, Dong Nai Province



LOCK & LOCK

1,500 tons - 40,000 m²

Phase: 2012 | 2013 | 2022

Location: My Xuan Industrial Park, Ba Ria – Vung Tau Province



YUPOONG

1,500 tons - 30,000 m²

Phase: 2015 | 2016 | 2017 | 2018

Location: Loteco Long Binh Industrial Park, Dong Nai Province
Hoa Binh Industrial Park, Long An Province



Other Projects



FANSIPAN COMPOSITE FILM BLOWING FACTORY

-  **Tonnage:** 400 tons
-  **Area:** 15,000 m²
-  **Location:** Long Hau Industrial Park, Long An Province
-  **Year:** 2025



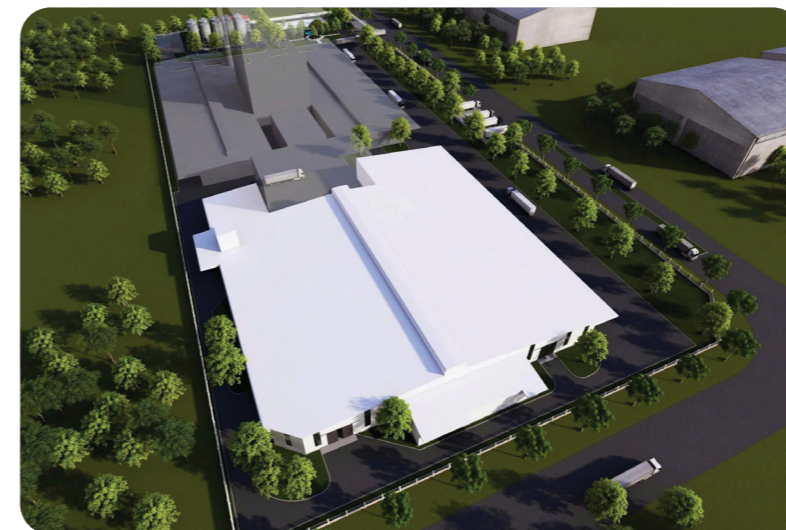
GSE MAINTENANCE & DIGITAL SERVICES 2 – LONG THANH INTERNATIONAL AIRPORT

-  **Tonnage:** 250 tons
-  **Area:** 3,000 m²
-  **Location:** Long Thanh, Dong Nai Province
-  **Year:** 2025



READY-BUILT FACTORY (RBF) PHASE 1 + PHASE 2 - VSIP III INDUSTRIAL PARK

-  **Tonnage:** 500 tons
-  **Area:** 20,000 m²
-  **Location:** VSIP III Industrial Park, Binh Duong Province
-  **Year:** 2025



NEWHOPE ANIMAL FEED WAREHOUSE

-  **Tonnage:** 450 tons
-  **Area:** 15,000 m²
-  **Location:** Binh Minh Industrial Park, Vinh Long Province
-  **Year:** 2025



LG INNOTEK

-  **Tonnage:** 2,000 tons
-  **Area:** 30,000 m²
-  **Location:** Trang Due Industrial Park, Hai Phong City
-  **Year:** 2025



KINGPOST - CONSTRUCTION OF MIXED APARTMENTS

-  **Tonnage:** 600 tons
-  **Area:** 2,000 m²
-  **Location:** Quy Nhon Nam, Gia Lai Province
-  **Year:** 2025

Other Projects



SOVI - RELOCATION AND EXPANSION

-  **Tonnage:** 300 tons
-  **Area:** 7,000 m²
-  **Location:** Lot K, Loc An Binh Son Industrial Park, Dong Nai Province
-  **Year:** 2025



LEADER GARMENT FACTORY

-  **Tonnage:** 1,000 tons
-  **Area:** 15,000 m²
-  **Location:** Hoa Phu Industrial Park, Vinh Long Province
-  **Area:** 2024



SEAH M&S VIETNAM CO., LTD. FACTORY

-  **Tonnage:** 800 tons
-  **Area:** 10,000 m²
-  **Location:** Phu My III Industrial Park, Ba Ria - Vung Tau Province
-  **Year:** 2024



CHOLIMEX FOOD PROCESSING FACTORY

-  **Tonnage:** 400 tons
-  **Area:** 10,000 m²
-  **Location:** Vinh Loc Industrial Park, Long An Province
-  **Area:** 2024



SAMHWA PAINTS FACTORY

-  **Tonnage:** 200 tons
-  **Area:** 5,000 m²
-  **Location:** Long Duc Industrial Park, Dong Nai Province
-  **Year:** 2024



K-FOOD WAREHOUSE

-  **Tonnage:** 800 tons
-  **Area:** 15,000 m²
-  **Location:** Nhon Trach Industrial Park, Dong Nai Province
-  **Year:** 2024

Other Projects



COLD STORAGE NICHIREI TAN BAO AN LOGISTICS VIETNAM

-  **Tonnage:** 500 tons
-  **Area:** 15,000 m²
-  **Location:** Long Hau Industrial Park, Long An Province
-  **Year:** 2023



TTC FOOD AND BEVERAGE PROCESSING FACTORY

-  **Tonnage:** 250 tons
-  **Area:** 10,000 m²
-  **Location:** Phong Nam Industrial Park, Ben Tre Province
-  **Year:** 2022



KUGIL FACTORY

-  **Tonnage:** 300 tons
-  **Area:** 10,000 m²
-  **Location:** Loc An Industrial Park – Binh Son, Dong Nai Province
-  **Year:** 2023



DONG PHUONG FOOTWEAR (TO2) FACTORY

-  **Tonnage:** 150 tons
-  **Area:** 8,000 m²
-  **Location:** Chau Duc Industrial Park, Ba Ria - Vung Tau Province
-  **Year:** 2022



LIEN KHUONG AIRPORT

-  **Tonnage:** 100 tons
-  **Area:** 1,000 m²
-  **Location:** Duc Trong, Lam Dong Province
-  **Year:** 2023



M PLAZA FLOOR RENOVATION

-  **Tonnage:** 600 tons
-  **Area:** 3,300 m²
-  **Location:** District 1, TP.HCM
-  **Year:** 2022

Other Projects



FACTORY FOR RENT BOUSTEAD

-  **Tonnage:** 550 tons
-  **Area:** 10,000 m²
-  **Location:** Nhon Trach II Industrial Park, Dong Nai Province
-  **Year:** 2019 | 2021



CARBOTEC BICYCLE PARTS FACTORY

-  **Tonnage:** 200 tons
-  **Area:** 15,000 m²
-  **Location:** Protrade Industrial Park, Binh Duong Province
-  **Year:** 2019



O-I GLASS FACTORY

-  **Tonnage:** 700 tons
-  **Area:** 20,000 m²
-  **Location:** My Xuan A Industrial Park, Ba Ria - Vung Tau Province
-  **Year:** 2021



MULTI-PURPOSE STADIUM – GO VAP DISTRICT CULTURAL CENTER

-  **Tonnage:** 50 tons
-  **Area:** 2,000 m²
-  **Location:** Go Vap District, Ho Chi Minh City
-  **Year:** 2019



PHONG THAI GROUP MULTI-PURPOSE SPORTS COMPLEX

-  **Tonnage:** 150 tons
-  **Area:** 5,000 m²
-  **Location:** Song May Industrial Park, Dong Nai Province
-  **Year:** 2021



GS PILE MANUFACTURING FACTORY

-  **Tonnage:** 1,000 tons
-  **Area:** 15,000 m²
-  **Location:** Phu My III Industrial Park, Ba Ria - Vung Tau province.
-  **Year:** 2019

Other Projects



CJ FOOD VIETNAM FACTORY

-  **Tonnage:** 150 tons
-  **Area:** 6,000 m²
-  **Location:** Kizuna Industrial Park, Long An Province
-  **Year:** 2018



TY BACH SHOE FACTORY

-  **Tonnage:** 1,000 tons
-  **Area:** 15,000 m²
-  **Location:** Binh Minh Industrial Park, Vinh Long Province
-  **Year:** 2018



MAGIKAN PLASTIC FACTORY

-  **Tonnage:** 350 tons
-  **Area:** 12,000 m²
-  **Location:** Chau Duc Industrial Park, Ba Ria - Vung Tau Province
-  **Year:** 2018



LOTTE ADVANCED MATERIAL FACTORY

-  **Tonnage:** 800 tons
-  **Area:** 12,000 m²
-  **Location:** Nhon Trach 6A Industrial Park, Dong Nai Province
-  **Year:** 2017



TRUNG VUONG HOSPITAL

-  **Tonnage:** 100 tons
-  **Area:** 4,000 m²
-  **Location:** District 10, Ho Chi Minh City
-  **Year:** 2018



SHTP READY-BUILT WAREHOUSE

-  **Tonnage:** 500 tons
-  **Area:** 10,000 m²
-  **Location:** CNC Zone District 9, Ho Chi Minh City
-  **Year:** 2017

Other Projects



PAVONINE FACTORY

- Tonnage:** 400 tons
- Area:** 10,000 m²
- Location:** My Xuan, Ba Ria - Vung Tau Province
- Year:** 2016



VIET HUNG PACKAGING FACTORY

- Tonnage:** 900 tons
- Area:** 1,000 m²
- Location:** Nhon Trach II Industrial Park, Dong Nai Province
- Year:** 2015



HANAM NEW FACTORY

- Tonnage:** 350 tons
- Area:** 10,000 m²
- Location:** CNC Zone District 9, Ho Chi Minh City
- Year:** 2016



BINH DIEN FERTILIZER JOINT STOCK COMPANY PROJECT

- Tonnage:** 300 tons
- Area:** 8,000 m²
- Location:** Binh Chanh District, Ho Chi Minh City
- Year:** 2014



VIET THANG ANIMAL FEED FACTORY

- Tonnage:** 450 tons
- Area:** 18,000 m²
- Location:** Song Hau Industrial Park, Dong Thap Province
- Year:** 2016



DISTRICT 2 HOSPITAL – SATELLITE ONCOLOGY DEPARTMENT

- Tonnage:** 250 tons
- Area:** 3,000 m²
- Location:** District 2, Ho Chi Minh City
- Year:** 2013

Other Projects



SAIGON BEER (SABECO)

- Tonnage:** 250 tons
- Area:** 10,000 m²
- Location:** District 12, Ho Chi Minh City
- Year:** 2013



CHINH TAN RUBBER FACTORY

- Tonnage:** 2,000 tons
- Area:** 50,000 m²
- Location:** Nhon Trach Industrial Park, Dong Nai Province
- Year:** 2009



QUANG MINH AGRICULTURAL PRODUCTS COMPANY- SOUTH PROJECT

- Tonnage:** 450 tons
- Area:** 12,000 m²
- Location:** Phu My Industrial Park, Ba Ria - Vung Tau Province
- Year:** 2012



SONGWOL TOWEL FACTORY

- Tonnage:** 500 tons
- Area:** 25,000 m²
- Location:** Tan Duc Industrial Park, Long An Province
- Year:** 2008



VRG DONGWHA MDF WOOD FACTORY

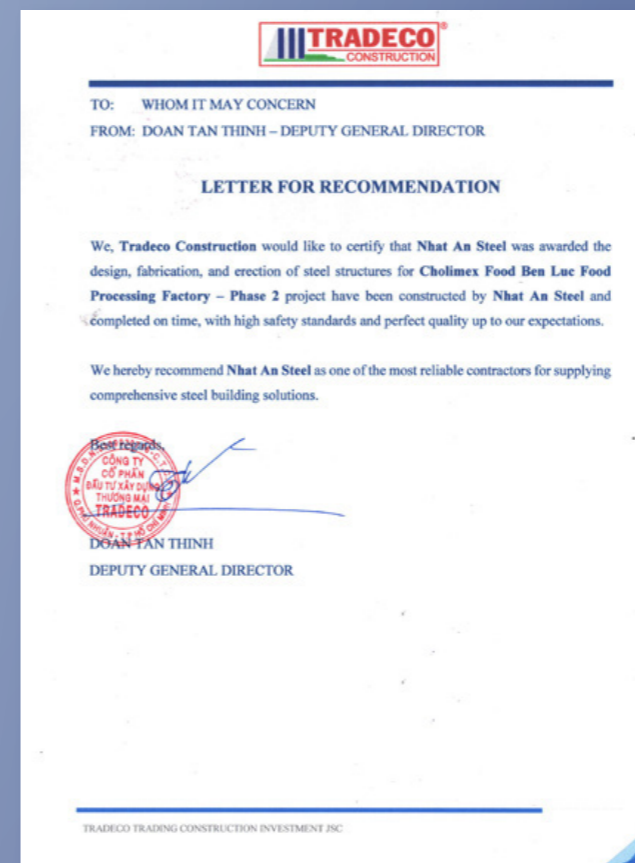
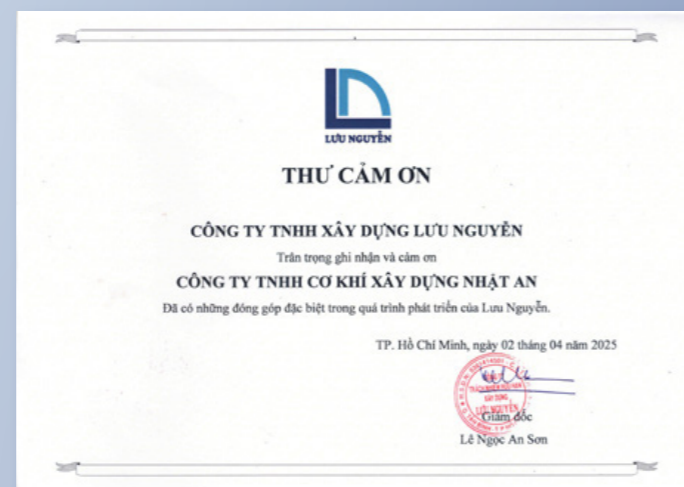
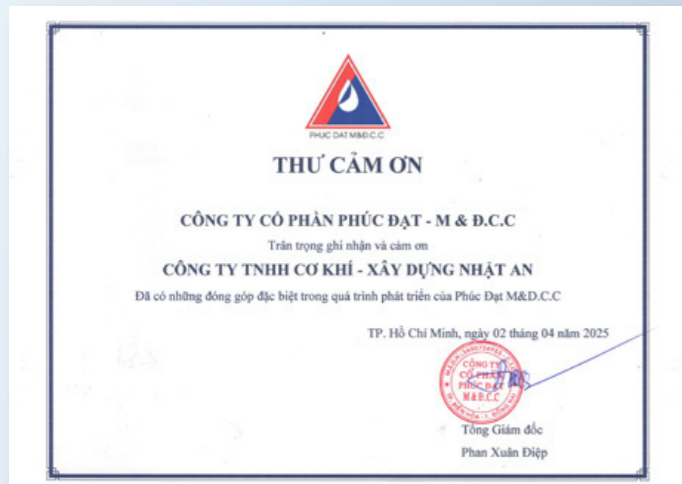
- Tonnage:** 1,500 tons
- Area:** 40,000 m²
- Location:** Minh Hung Industrial Park, Binh Duong Province
- Year:** 2011



TAIHAN CABLE FACTORY

- Tonnage:** 800 tons
- Area:** 20,000 m²
- Location:** Long Thanh Industrial Park, Dong Nai Province
- Year:** 2006

CERTIFICATION

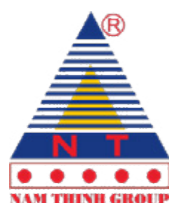


INVESTOR AND PARTNER

INVESTOR



PARTNER



“ PASSION FOR STEEL
WE BUILD WITH HEART “



CONTACT

OFFICE

285/18A Trinh Dinh Trong, Hoa Thanh Ward, Tan Phu District, Ho Chi Minh City
Tel: (028) 39733385 - Fax: (028) 38605496

FACTORY

Lot 1, Road 7A, Nhon Trach Industrial Park, Nhon Trach District, Dong Nai Province
Tel: (02513) 569138 - Fax: (02513) 569138



nhatansteel.com.vn



[linkedin.com/company/nhat-an-steelstructure](https://www.linkedin.com/company/nhat-an-steelstructure)



[facebook.com/nhatansteel01](https://www.facebook.com/nhatansteel01)



PASSION FOR STEEL
WE BUILD WITH HEART